

# Science

8 February 2002

Vol. 295 No. 5557  
Pages 917-1180 \$9



## The Bionic Human:

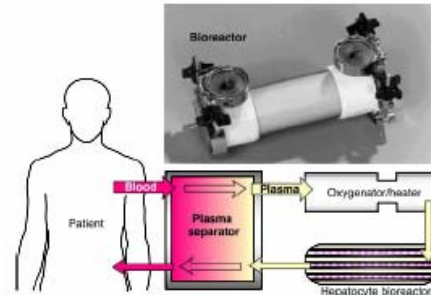
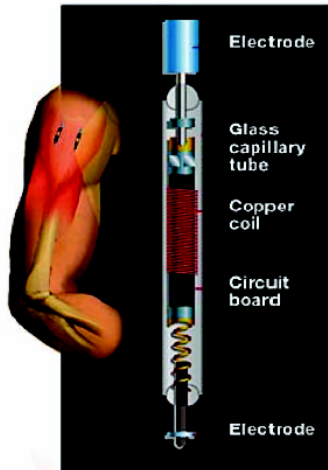
*a talk by Christian  
Freudiger*



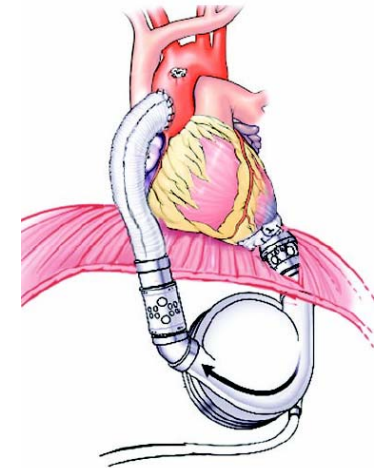
**Implants and hybrid technologies find many fields of applications:**

Artificial organs (e.g. liver)

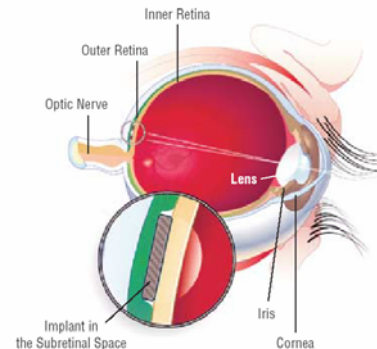
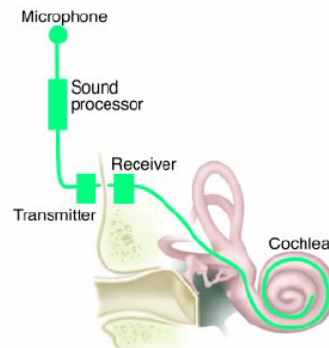
Artificial muscles,  
bones and joints



Circulatory support  
(e.g. pacemakers)



Restoring senses  
(e.g. artificial retina)



# The Bionic Human



## 1. What's the problem

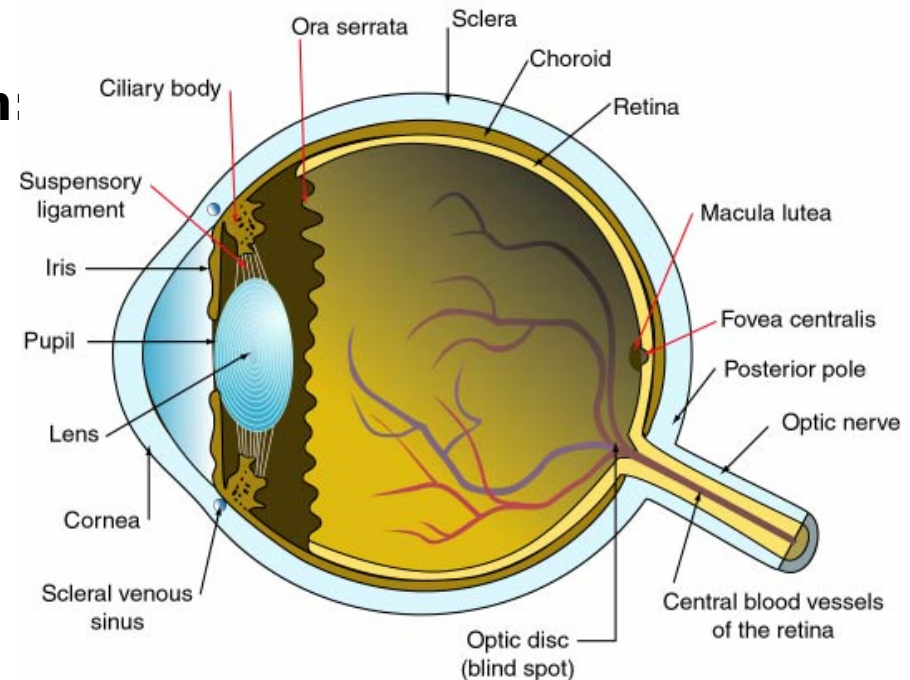
### Features of the visual system:

- Resolution: 75  $\mu\text{m}$  at distance of 25 cm (=angular difference of 1')
- refresh rate: approx. 40 Hz
- color contrast: approx. 100Mio different colors
- intensities: 60 Photons (=100W bulb in 600 km distance)

### Functioning of the visual system:

#### 1. Optical part:

- reproduce sharp picture on the retina
- adjust light intensity





# The Bionic Human



## 1. What's the problem

### Typical illnesses that could be healed:

- **Retinitis Pigmentosa:**

- continuous degeneration of the retina
- inherited blindness
- most common form of blindness:  
1.5 million people affected worldwide  
(= 1 of 3500 births)

- **Age-related macular degeneration:**

- continuous degeneration of rods in the macula (visual disk)
- typical disease of older people
- more and more people are affected  
70.000 new patients in the U.S. a year

**But:** neurons mainly stay alive





### Different approaches to stimulate nerves of the visual system:

#### **Cortical prosthesis:**

direct stimulation of the visual cortex in the brain with electrodes:

- surface electrodes
- intracortical electrodes

First experiments in 1947 (wires through the skull)

#### **Retinal prosthesis:**

implant into the eye that replaces the retina (at least in parts)

#### **Subretinal prosthesis:**

replacement of photo-receptors by "solar cells"

#### **Epiretinal prosthesis:**

stimulation of ganglion cells with signal from external detector

#### **Optic nerve prosthesis:**

stimulation of the optical nerve (1.2 Mio ganglion cells within 2mm-diameter cylinder)

Method was mainly pursued in the 70s

# The Bionic Human



## 1. What's the problem

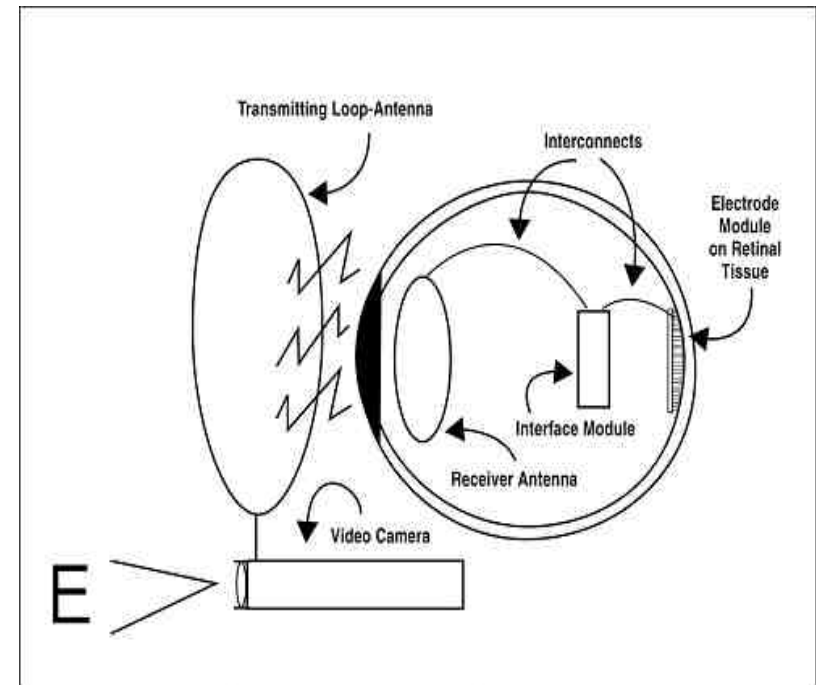
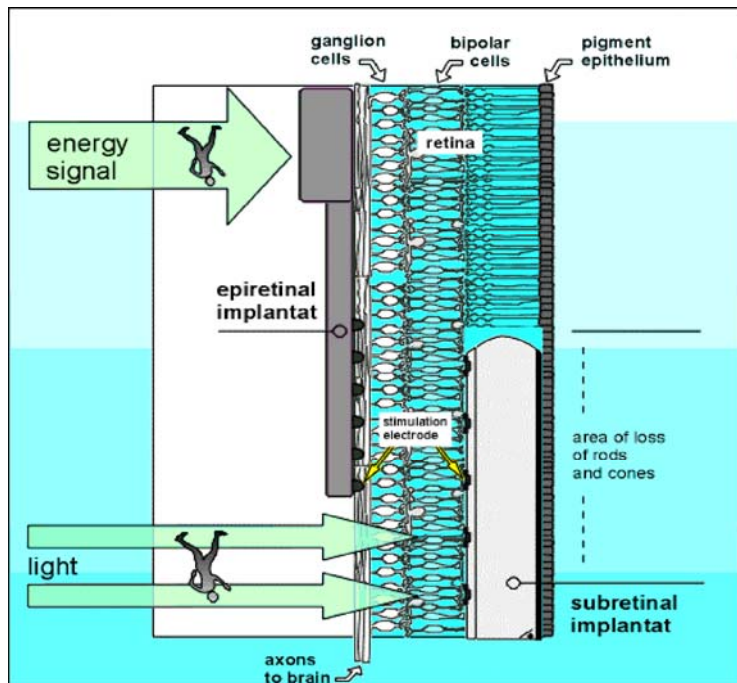
### Types of retinal prosthesis

#### Subretinal prosthesis:

Replacement of photoreceptors in the retina by photosensitive devices

#### Epiretinal prosthesis

Stimulation of ganglion cells with signal from external detector (camera)



# The Bionic Human



## 1. What's the problem

System-Engineering:  
Design of implant and fabrication

Materials layout and encapsulation:

- resistance
- protection of tissue

Understanding the nervous system:

- proper stimulation parameters
- suitable electrode design

**How can physicists and engineers help?**

Power supply and information transfer:

- inductive coupling
- converting near infrared light

Sensor design:

- photodiodes
- solar cells





### Outline of the talk:

1. *What's the problem*
2. Functionality of neurons and consequences for stimulation
  - information transmission in neurons
  - electrical stimulation of neuronal activity
  - proper parameters and electrode design for effective stimulation
3. Sensor design: functionality of a solar cell and a photo-conductor
4. Wireless power supply and information transmission
5. Suitable materials and encapsulation
6. State of the art systems:
  - epiretinal prototypes
  - subretinal prototypes → especialla MPDA

## **2. How does a human transmit information?**

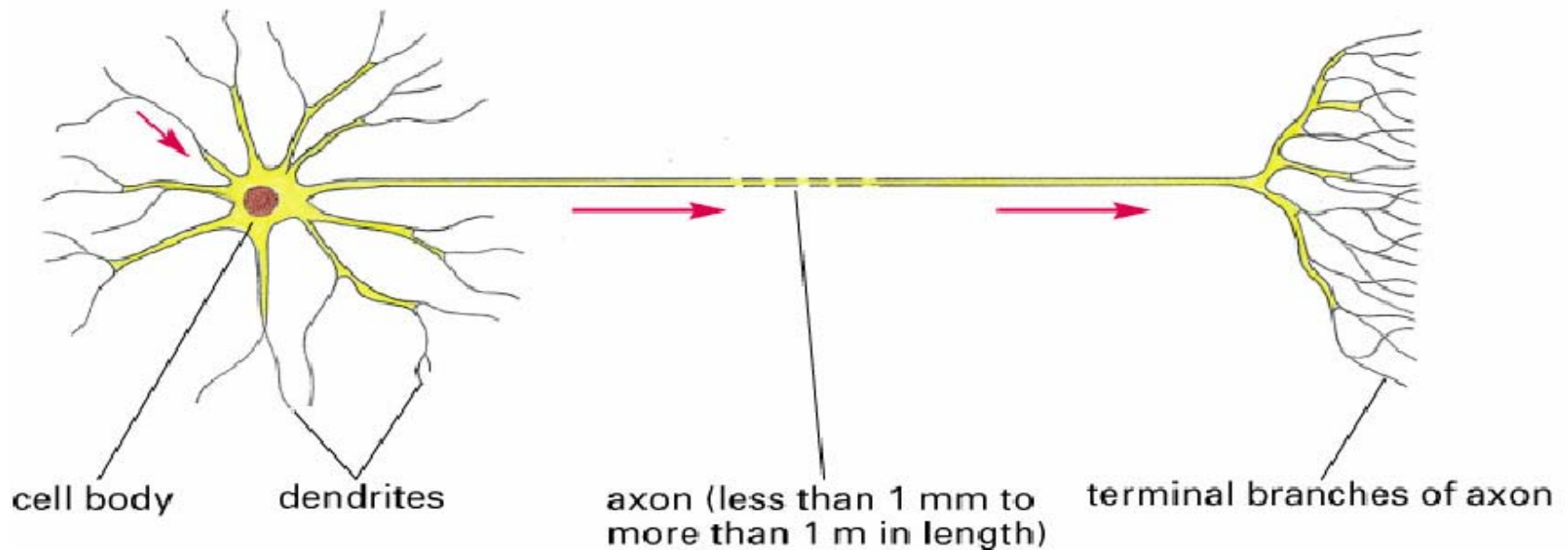
# The Bionic Human



## 2.1 Information transmission in neurons

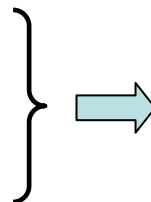
### 2.1 How does the hand know, what the leg is doing?

The neuron (= nerve cell):



**Difference between a “telephone cable” and a neuron:**

- neurons are purely isolated
- bathed in a conductive bath



How can a leaky cable carry a sharp signal over a long distance?

# The Bionic Human



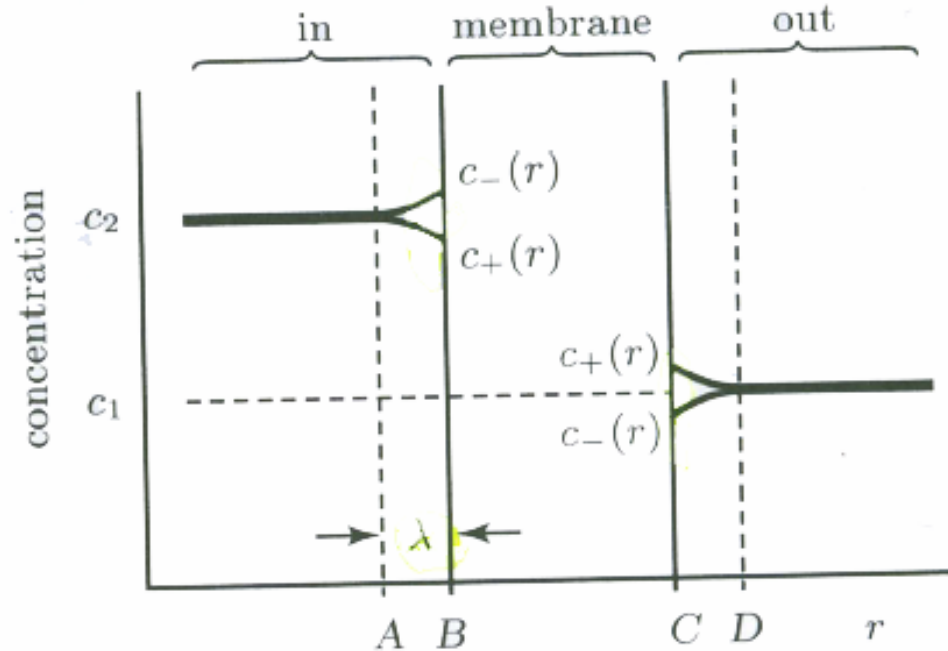
## 2.1 Information transmission in neurons

### The Nernst Potential:

Example system for **stationary case** (no net flux):

- 2 chambers filled with neutral ion solution:
 
$$c_2^+ = c_2^- \quad \left. \begin{array}{l} c_1^+ = c_1^- \\ c_2^+ > c_1^+ \end{array} \right\}$$

- membrane is only permeable for positive Ions



- Positive ions cross the membrane (increase entropy)
  - electrical field across the membrane
  - equilibrium

Quantitative description via Boltzmann distribution:

$$\frac{c_2}{c_1} = e^{\frac{Z \cdot e \cdot \Delta V}{k_B \cdot T}} \Rightarrow V_{Nernst} = -\frac{k_B \cdot T}{Z \cdot e} \cdot \ln\left(\frac{c_2}{c_1}\right) \quad \text{(Nernst Potential)}$$



### Generalization to more mobile species: The Donnan Potential

Applicable to neuron cell:

- Proteins, DNA, ... (inside): negatively charge and immobilized
- Ions (mainly:  $K^+$ ,  $Na^+$ ,  $Cl^-$ ) diffuse through membrane

### Results:

$$V_{\text{mem}} \approx -60\text{mV} \quad \text{and} \quad \frac{c_{Na^+}^{\text{inside}}}{c_{Na^+}^{\text{outside}}} = \frac{c_{K^+}^{\text{inside}}}{c_{K^+}^{\text{outside}}} = \frac{c_{Cl^-}^{\text{outside}}}{c_{Cl^-}^{\text{inside}}}$$

**But:** Experimentally measured ion-concentration

Ion	Valence $z$	Interior $c_{2,i}$ (mM)	Relation	Exterior $c_{1,i}$ (mM)	Nernst potential $V_i^{\text{Nernst}}$ (mV)
$K^+$	+1	400	>	20	-75
$Na^+$	+1	50	<	440	+55
$Cl^-$	-1	52	<	560	-60



So what's wrong?

If you are able to apply equilibrium statistical mechanics to a biological system,

**Your system will be dead!**

(Pincus Conjecture)

Cells at rest burn food

→ combat the drive towards equilibrium.

In the case of neurons:

Membrane protein Na<sup>+</sup>-K<sup>+</sup>-ATPases pumps:

- Na<sup>+</sup> to the outside (3 ions per cycle)
- K<sup>+</sup> to the inside (2 ions per cycle)
- under consumption of ATP





### Non-Equilibrium model of membrane-potential:

Ohm's hypothesis:  $j_i = -g_i \cdot (\Delta V - V_i^{Nernst}) + j_i^{pump}$  (with  $i=Na^+, K^+, \dots$ )

with: -  $\Delta V$  is the membrane potential (charged capacitor)

- **generalization of Nernst Potential** (non-equilibrium):  
"translation" of entropic forces into an electrical potential

$$V^{Nernst} := -\frac{k_B \cdot T}{Z \cdot e} \cdot \ln\left(\frac{c^{in}}{c^{out}}\right)$$

-  $j_i$  and  $j_i^{pump}$  are current densities

**Assumption: steady state:**

$$j_i = 0$$

(more general  $\sum_i j_i = 0$ )

$$\rightarrow \underbrace{j_K^{pump} = g_K \cdot (\Delta V - V_K^{Nernst})}_{j_K=0} = \underbrace{-\frac{2}{3} \cdot j_{Na}^{pump} = -\frac{2}{3} \cdot g_{Na} \cdot (\Delta V - V_{Na}^{Nernst})}_{j_{Na}=0}$$

with  $j_K^{pump} = -\frac{2}{3} \cdot j_{Na}^{pump}$  due to the characteristics of the Na-K-ATPase

# The Bionic Human



## 2.1 Information transmission in neurons

### → simplified Goldman-Hodgkin-Katz Equation:

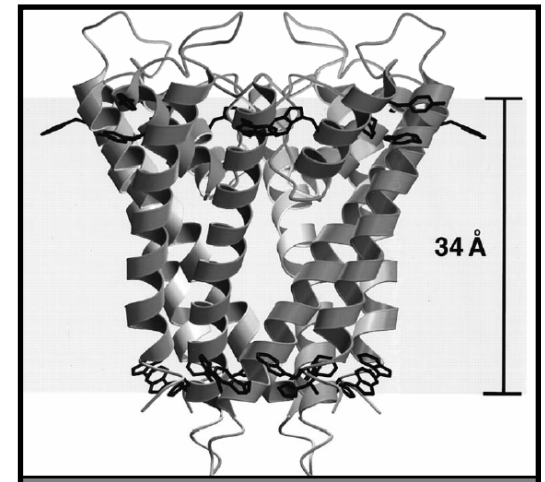
$$\Delta V = \frac{2 \cdot g_{Na} \cdot V_{Na}^{Nernst} + 3 \cdot g_K \cdot V_K^{Nernst}}{2 \cdot g_{Na} + 3 \cdot g_K}$$

### Interpretation:

- cell at rest (depolarization):  $g_K \gg g_{Na}$ 
  - membrane potential is dominated by Nernst Potential:  $V_K^{Nernst} \approx -75\text{mV}$
- excited cell (action potential):  $g_{Na} \gg g_K$ 
  - membrane potential is dominated by Nernst Potential:  $V_{Na}^{Nernst} \approx +55\text{mV}$

### → Voltage-gated ion channels

- pores in the membrane
- open when the membrane potential exceeds a threshold
- high, ion-specific conductance (when open)







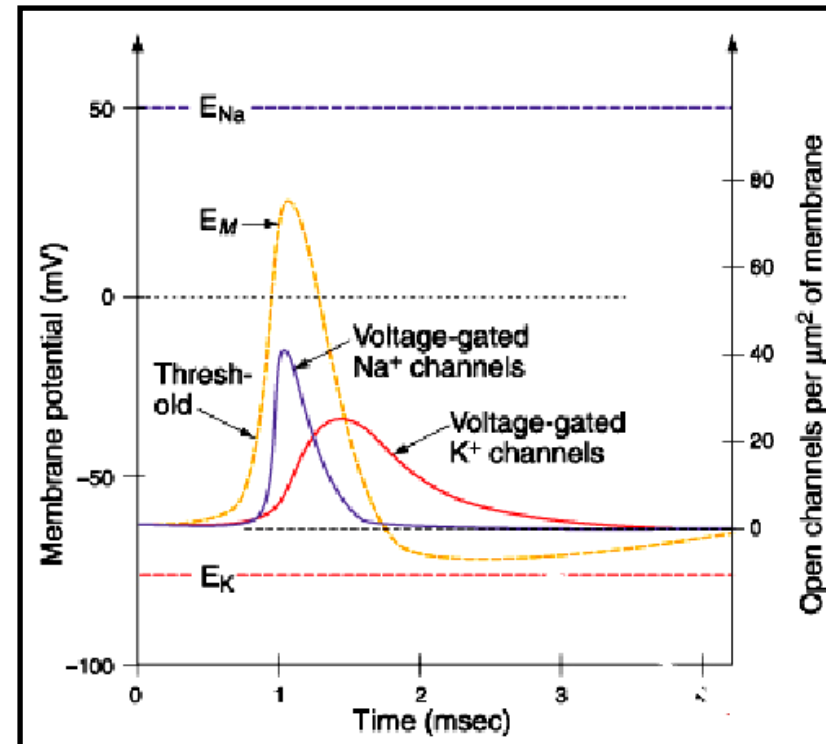
**How is an action potential (=nerve impulse) created?**

**Cell at rest:**  $\text{Na}^+$ - and  $\text{K}^+$ -ion-channels closed

→ membrane at rest potential ( $\approx -65\text{mV}$ )

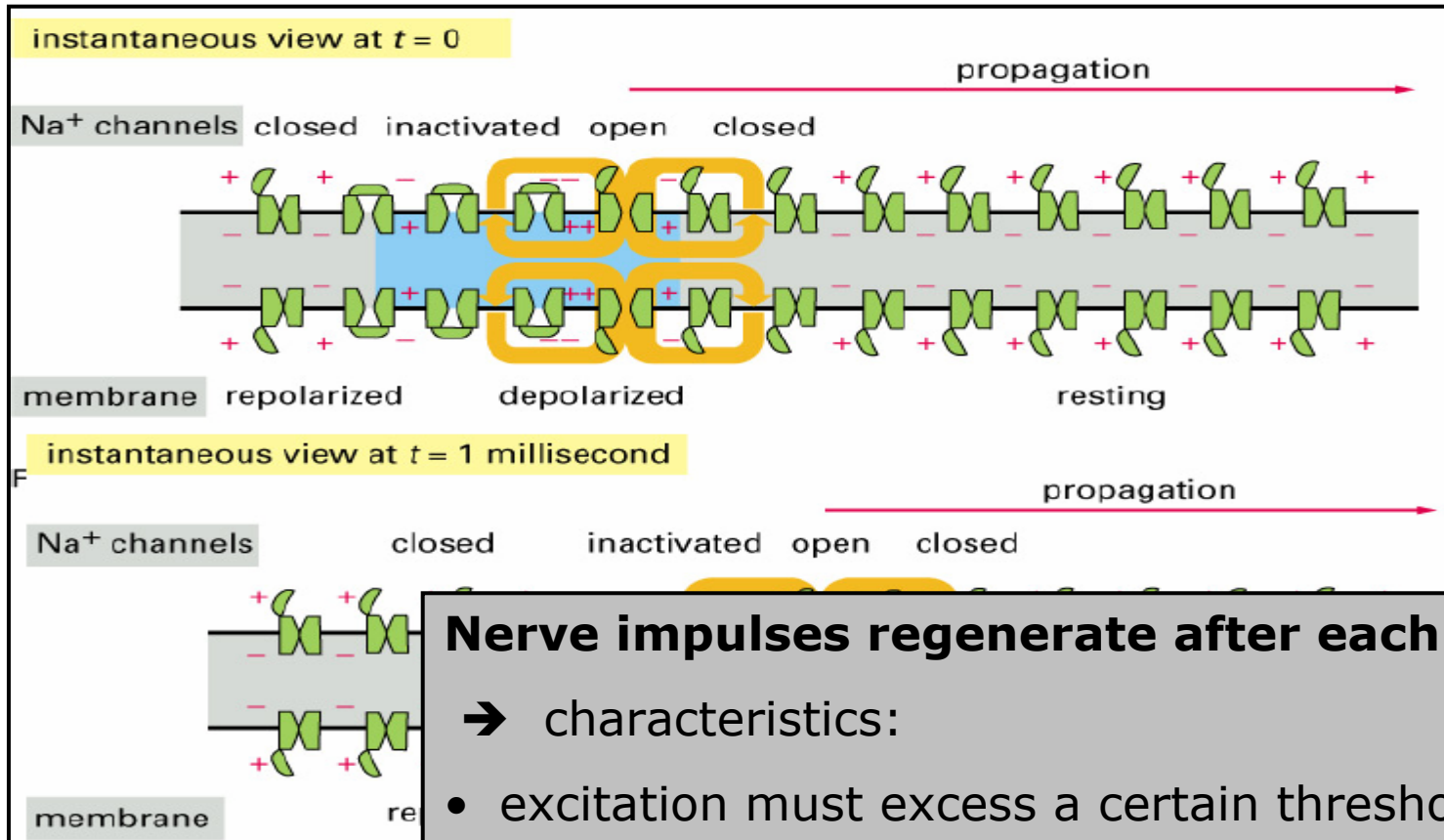
**Excitation above threshold:**

1.  $\text{Na}^+$ -channels open  
→ m.p. increases
2.  $\text{K}^+$ -channels open delayed  
Na-channels close with further delay  
→ m. p. has maximum ( $\approx +20\text{mV}$ )  
→ cell hyperpolarizes ( $\approx -70\text{mV}$ )
3.  $\text{K}^+$ -channels close  
→ membrane at rest potential  
**= action potential (AP)**





### Propagation of neuronal signals



**Nerve impulses regenerate after each step**

→ characteristics:

- excitation must exceed a certain threshold
- neurons show "all-or-nothing" response

→ no graded signals



### Summary:

#### Biological Question:

How can a leaky cable carry a sharp signal over a long distance

#### Physical answer:

Nonlinearity in a cell membrane's conductance (= *ion channels*) turns the membrane into an excitable medium, which can transmit waves by continuously regenerating (= *action potentials*) them.

#### → Characteristics of information transmission:

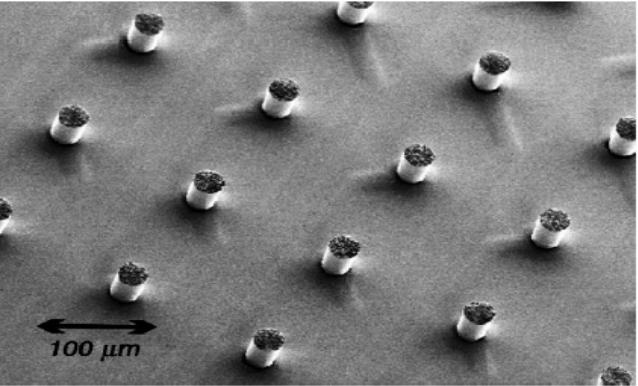
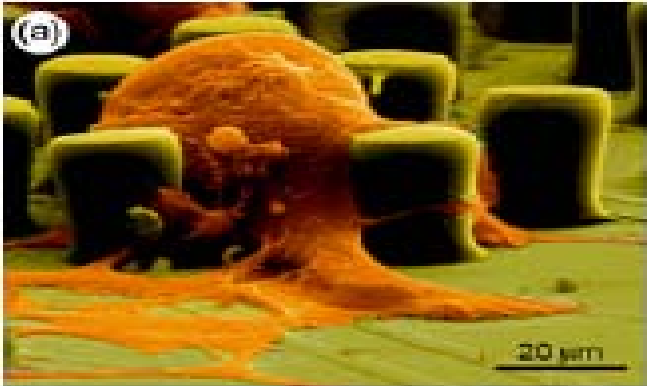
- excitation must exceed a certain threshold
- neurons show “all-or-nothing” response
  - no graded signals



### 2.2 How to stimulate an action potential with a battery?

**Answer:** Just increase the membrane potential above the threshold with an electrode!

#### Methods pursued:

amperimetric electrode	capacitive electrode
<p data-bbox="310 801 877 848">mainly platinum electrodes</p>  <p data-bbox="300 1253 415 1296">100 <math>\mu\text{m}</math></p>	<p data-bbox="1035 801 1782 905">mainly semiconductor covered with oxide layer</p>  <p data-bbox="1606 1276 1702 1305">20 <math>\mu\text{m}</math></p>

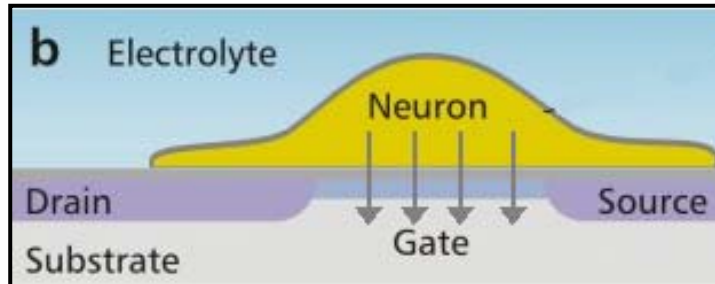
# The Bionic Human



## 2.2 Electrical stimulation of neuronal activity

### The interface:

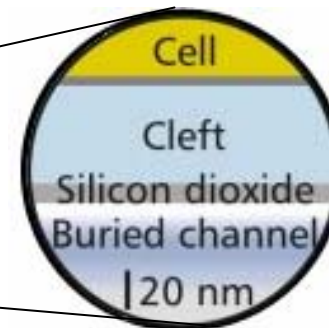
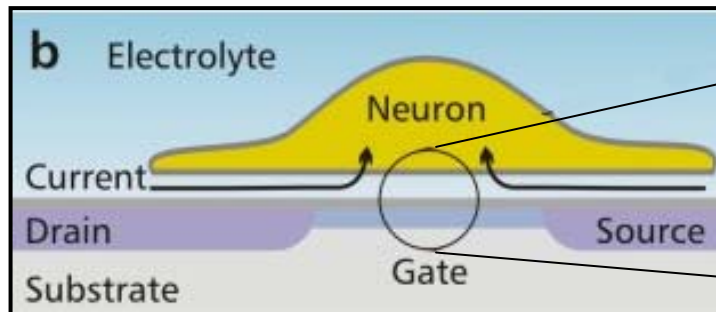
- simplest guess: neuron and substrate form *compact dielectric*



higher charge density in the substrate  
→ electric field across the oxide-layer and cell-membrane

= *charging a capacitor*

- real case: *conductive cleft* between neuron and substrate



higher charge-density in substrate

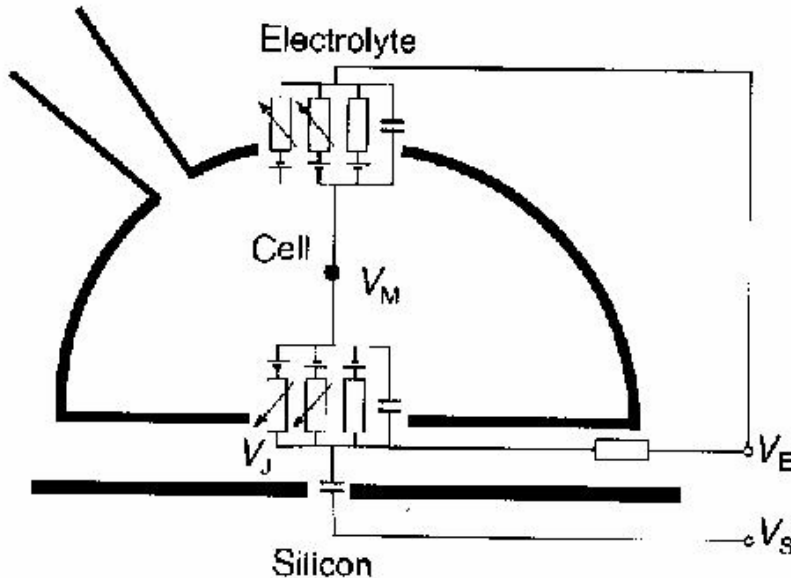
→ current through the conductive cleft ( $R \approx M\Omega$ ) → voltage drop

= **Transductive Extracellular Potential**



### Mathematical description:

### The planar core-coat-model



Identification of structural elements with parts of electrical circuit, e.g.:

- conductive cleft = resistor
- oxide-layer = capacitor
- membrane = complicated circuit

➔ **Equivalent circuit**

### Underlying physical principal:

### Kirchhoff's Law

At any point in an electrical circuit the sum of currents flowing towards that point is equal to the sum of currents flowing away from that point.

e.g.:

$$\sum_i g_{JM}^i (V_M - V_J - V_0^i) + c_M \left( \frac{dV_M}{dt} - \frac{dV_J}{dt} \right) = g_J \cdot (V_J - V_E) + c_S \left( \frac{dV_J}{dt} - \frac{dV_S}{dt} \right)$$



### Results:

- it is possible to stimulate an action potential electrically
- but: high voltages are needed ( $\approx 1-5V$ )

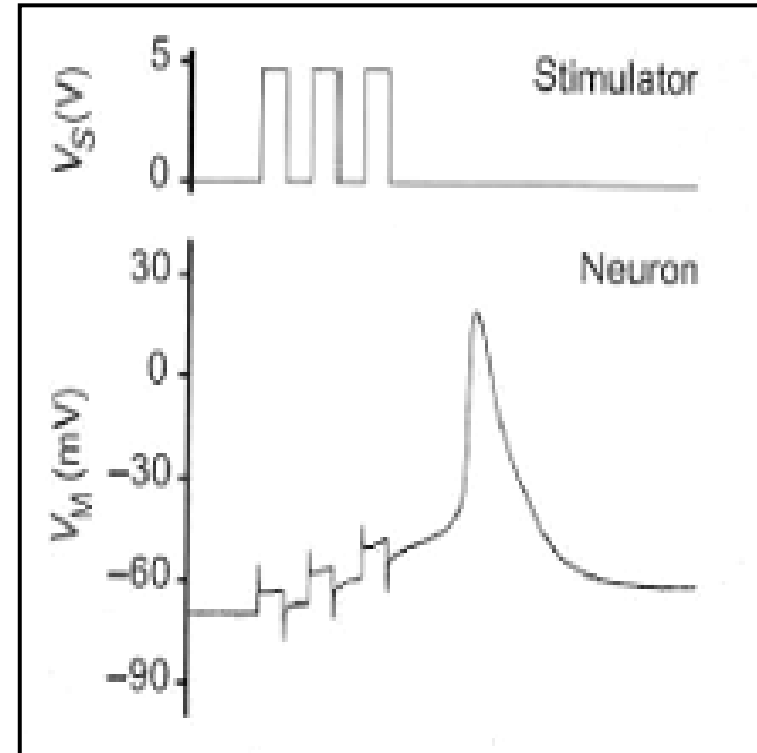
$$V_M = V_M^0 + V_{st} \cdot \left[ a \cdot \exp\left(-\frac{t}{\tau}\right) + \beta \right]$$

rest potential

charging the membrane

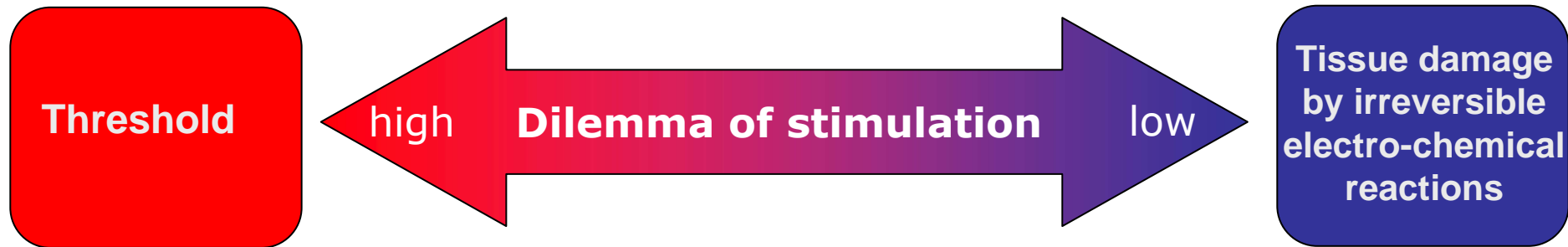
ohmic current into the neuron

- periodic pulses are most effective
- distance neuron-substrate (cleft thickness) is crucial parameter
  - ➔ surface modification to decrease distance (=nanotechnology)  
e.g. Poly-L-Lysin coating





### 2.3 Stimulation parameters – a thin line between life and death



in-vivo thresholds:

- current: 50-200  $\mu\text{A}$
- charge density: 0.2-70  $\mu\text{C}/\text{cm}^2$

safe parameters (chronic implantation):

- current: 10-100  $\mu\text{A}$
- charge density: 100  $\mu\text{C}/\text{cm}^2$

**But: cochlear implants have helped deafs for years**

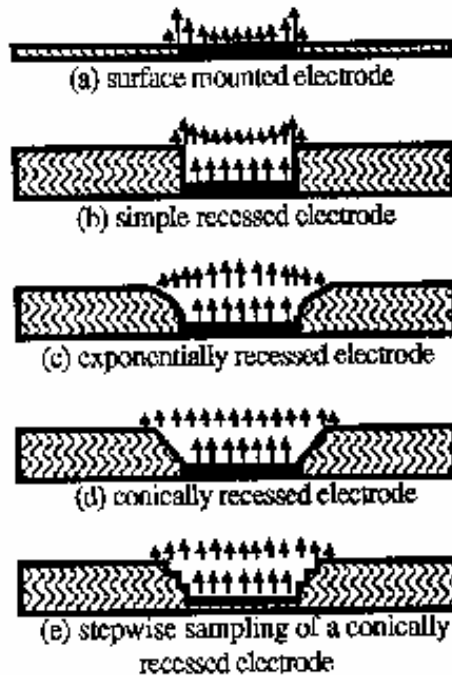
Other important parameters:

- pulse length
- rate of stimulation
- polarity (anodic/cathodic/bipolar current) → wave-form

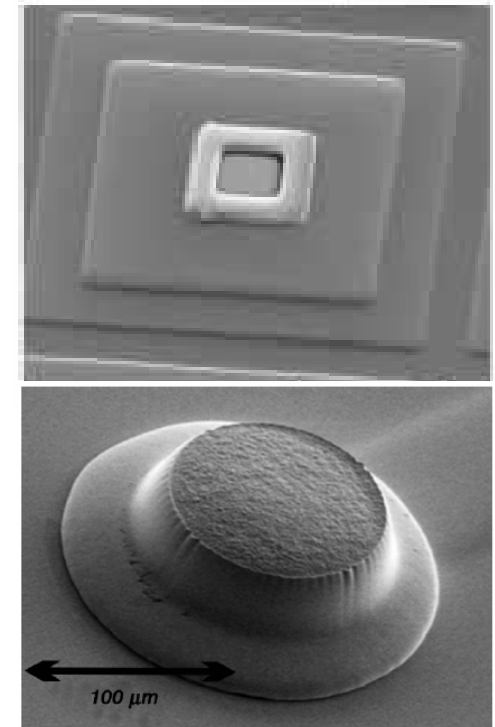




### Electrode design:



- high current densities  
→ destruction of tissue by irreversible electro-chemical reaction
- delocalized stimulation  
→ low contrast of the perceived picture
- homogeneous, but localized currents



# The Bionic Human

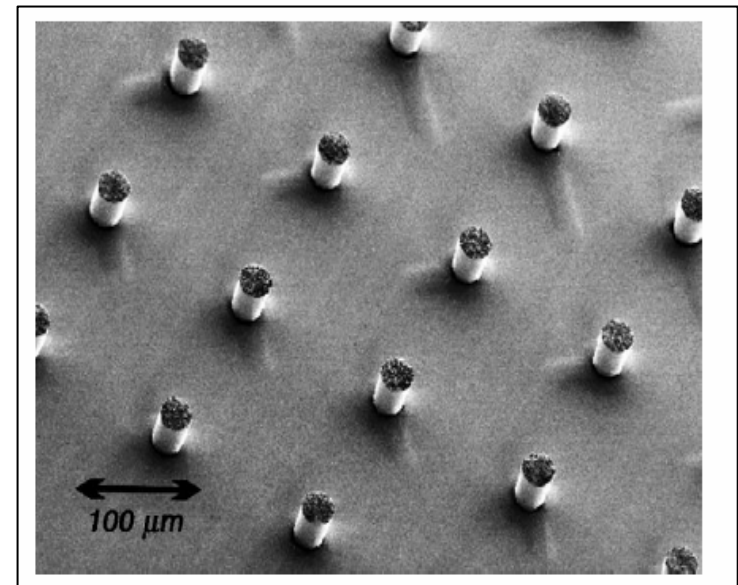
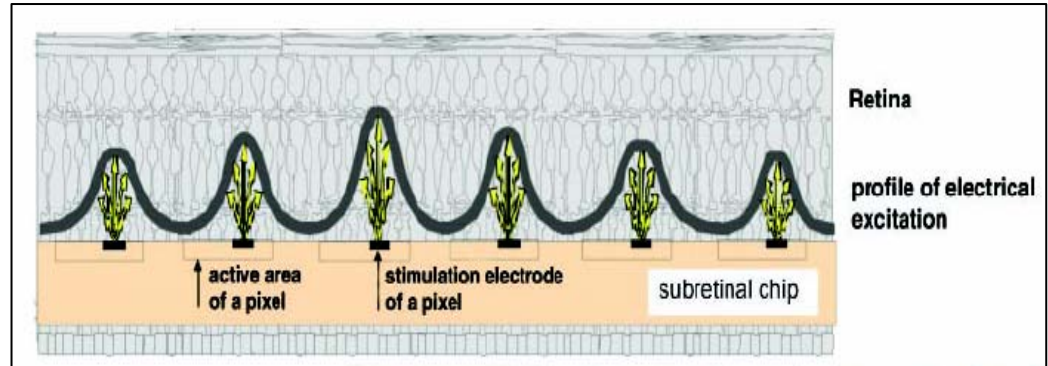


## 2.3 Stimulation parameters and electrode design

### Predicted perception:

Not only a single neuron is stimulated:

- no color-vision
- low contrast vs. pixeled



→ **Proper array layout:** Distance of electrodes  $\approx$  70-200  $\mu\text{m}$



**3. How to build an electrical photo sensors?**

# The Bionic Human

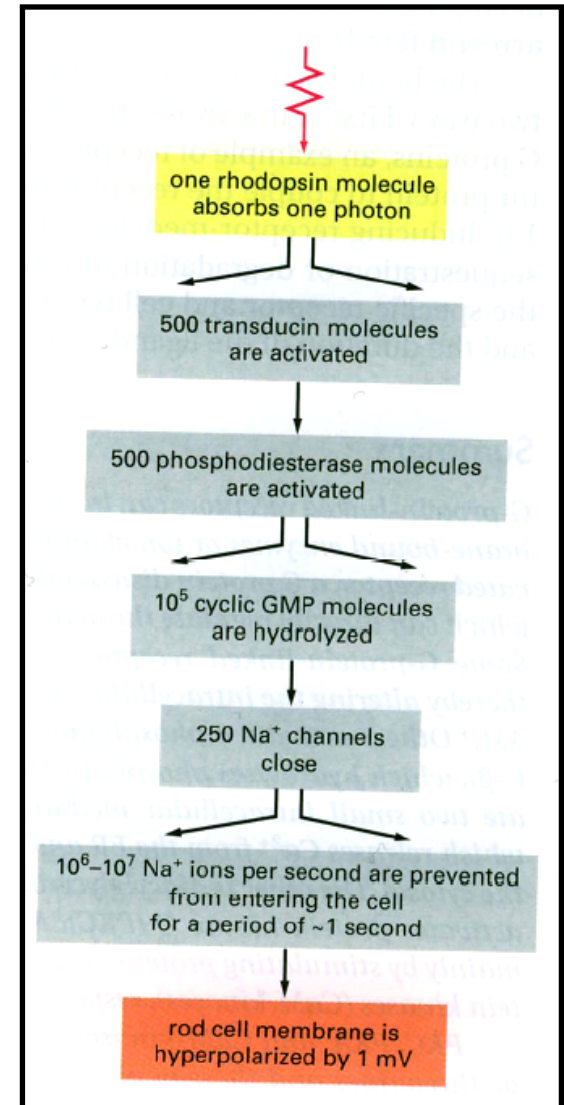
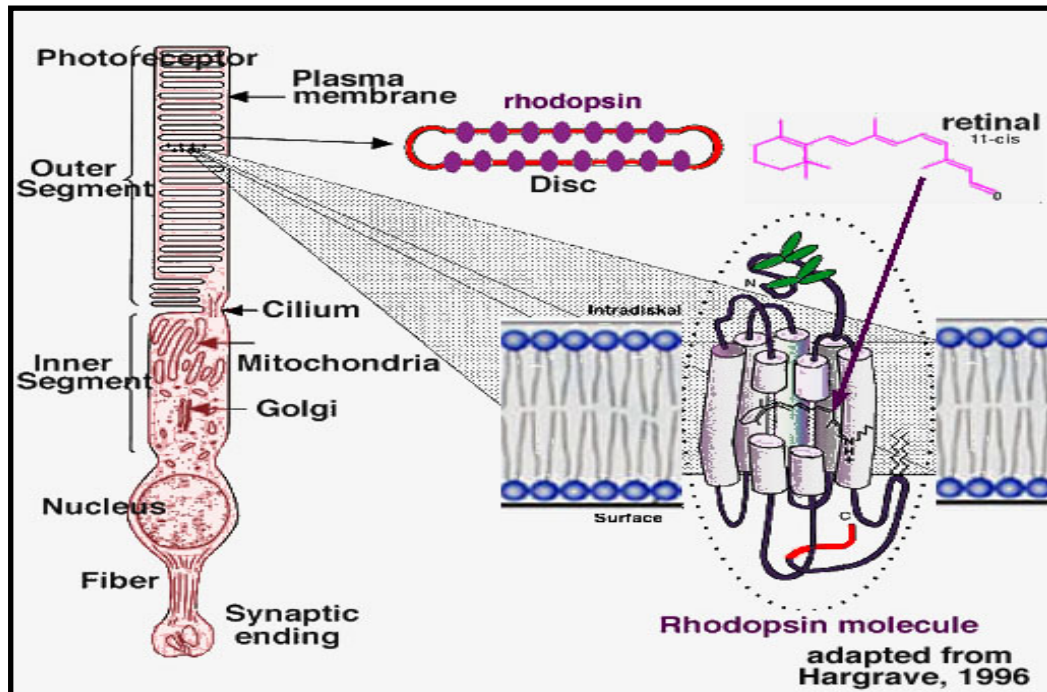


## 3. Electrical photo sensors

### How does the eye sense light?

Rods and Cones contain rhodopsin as photo-sensitive molecule:

Photon → conformational change in chromophore  
→ activation of transduction cascade



# The Bionic Human



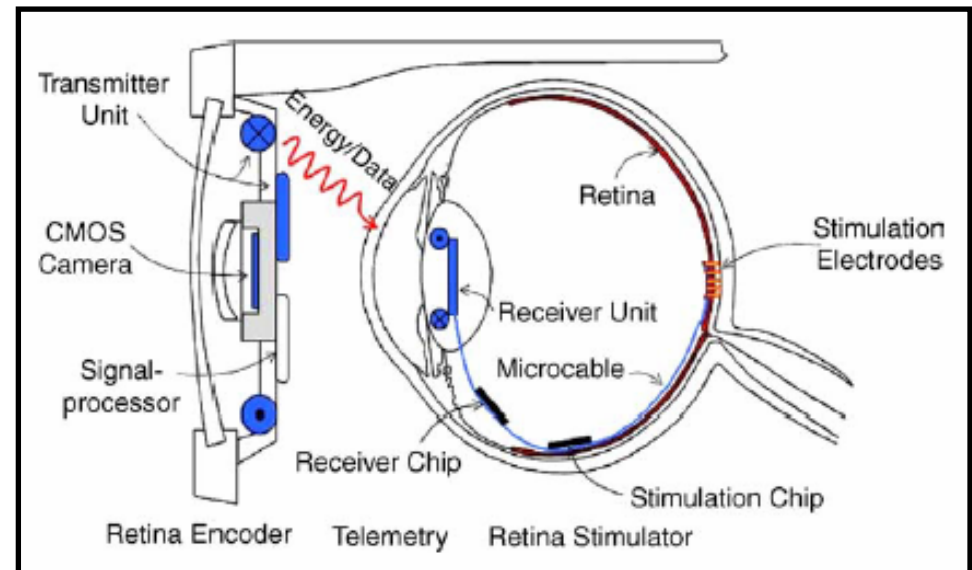
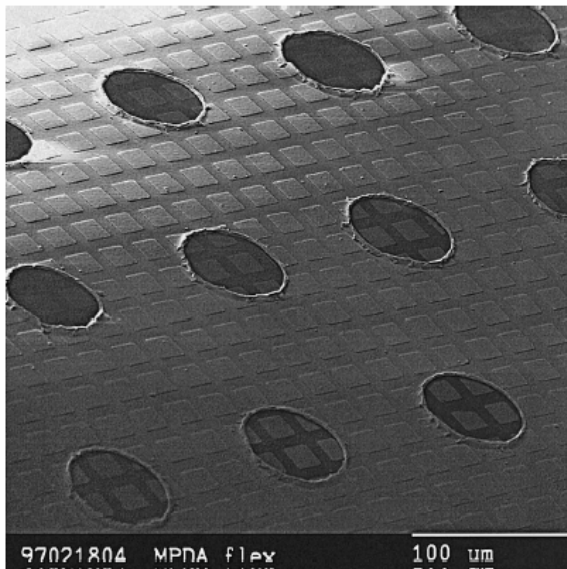
## 3. Electrical photo sensors

### Underlying physical principal:

Photon  $\longrightarrow$  electric pulse

### Technical realization:

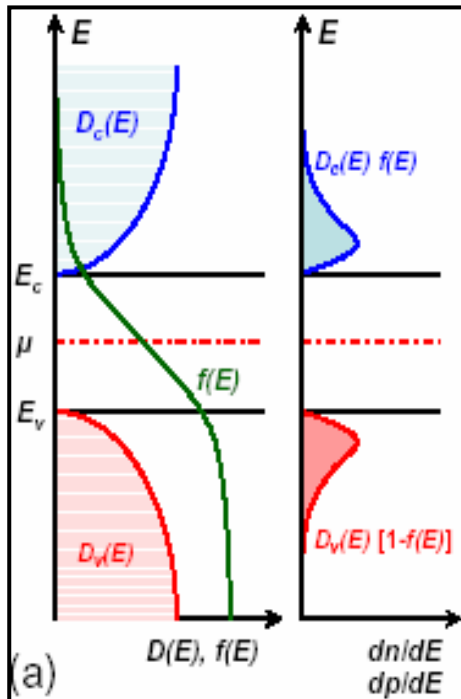
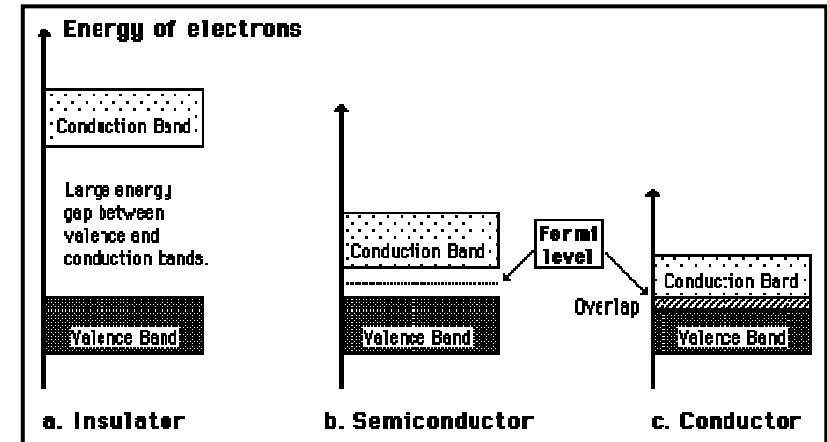
- solar cell / photodiode  $\rightarrow$  subretinal implant (receptor substitution)
- CCD / CMOS-Camera  $\rightarrow$  epiretinal implant (extern camera)





### Devices based on semiconductors

→ **How do semiconductors work?**  
(a semi-quantitative description)



### Intrinsic semiconductors:

Thermal excitation produces electron-hole-pairs, i.e. an electron from the valence band is lifted into the conduction band and leaves a hole

charge-carrier densities:  $n_c = \frac{1}{V} \cdot \int_{E_c}^{\infty} D_c(E) \cdot f(E, T) dE$

$$p_v = \frac{1}{V} \cdot \int_{-\infty}^{E_v} D_v(E) \cdot [1 - f(E, T)] dE$$

with  $n_c = p_v \Rightarrow \mu = E_v + \frac{1}{2} \cdot E_g$  (chem. potential)

# The Bionic Human



## 3. Electrical photo sensors

### Doped semiconductor:

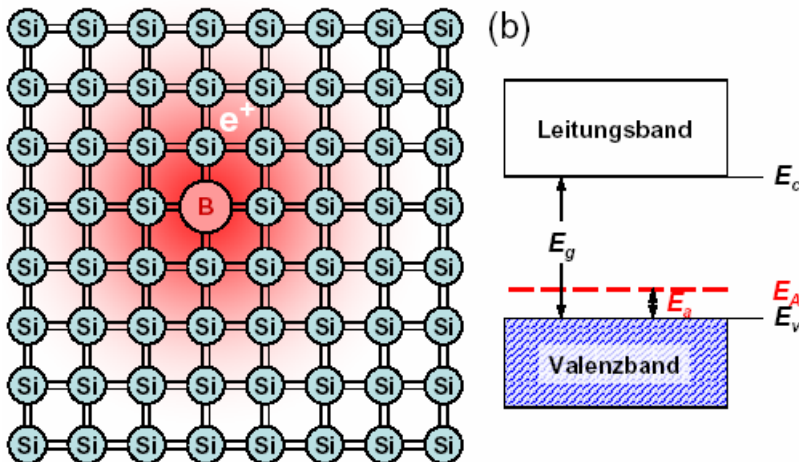
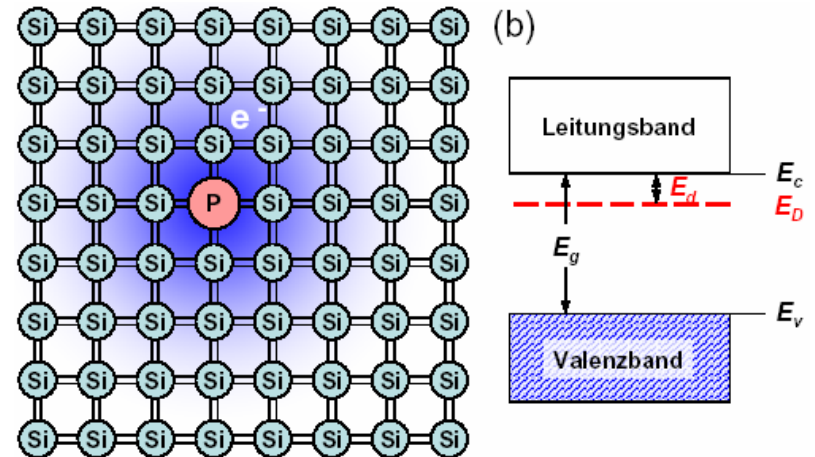
intentional introduction of impurities into a pure semiconductor

→ movement of Fermi-level

### n-type:

introduction of foreign atom with more valence electrons (e.g. P in Si)

→ more electrons in conduction band



### p-type:

introduction of foreign atom with less valence electrons (e.g. B in Si)

→ more holes in valence band



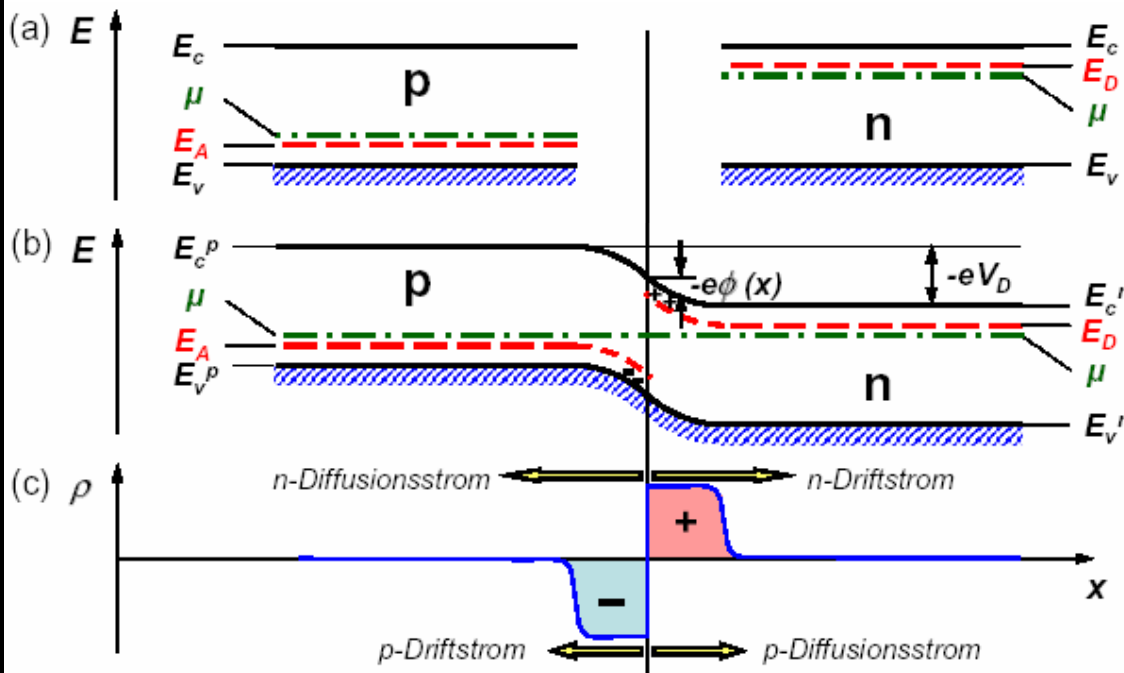
### Inhomogeneous semiconductors: p-n-Interface

One semiconductor is treated with different impurities

e.g. left: p-type right: n-type

$$N_A(x) = \begin{cases} N_A & \text{für } x < 0 \\ 0 & \text{für } x > 0 \end{cases}$$

$$N_D(x) = \begin{cases} 0 & \text{für } x < 0 \\ N_D & \text{für } x > 0 \end{cases}$$



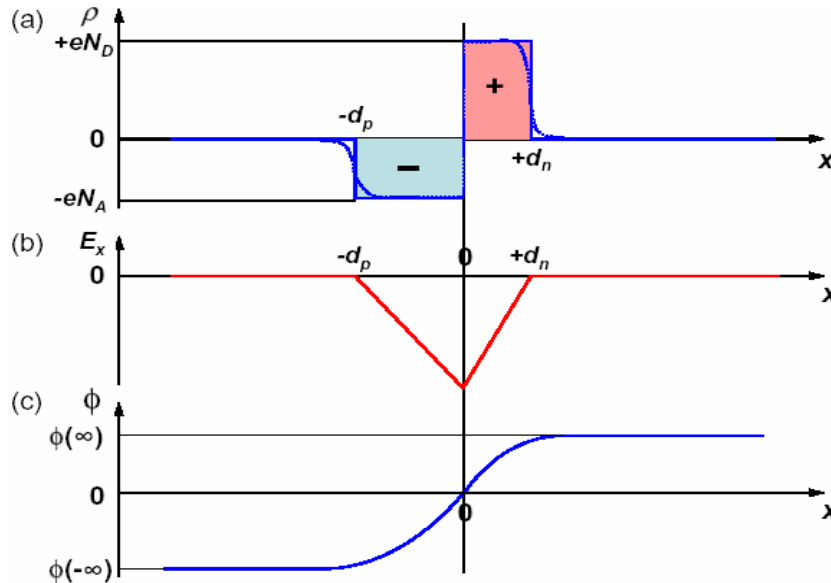
Separate:  
different Fermi-levels

Contact + thermal equilibrium  
 → same chemical potential  
 → binding of bands due to depletion layer





**Shottky model:** Depletion layer is homogeneous and sharply bounded



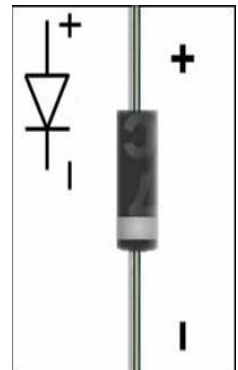
simplified charge distribution

→ linear increase in electric field density

→ sigmoidal increase in potential

## Functionality as diode

- Forward bias: charge carriers move in the “proper” direction of the internal electric field  
→ diode conducts
- Reverse bias: charge carriers move in the “wrong” direction  
→ diode blocks  
(small reverse current)



# The Bionic Human

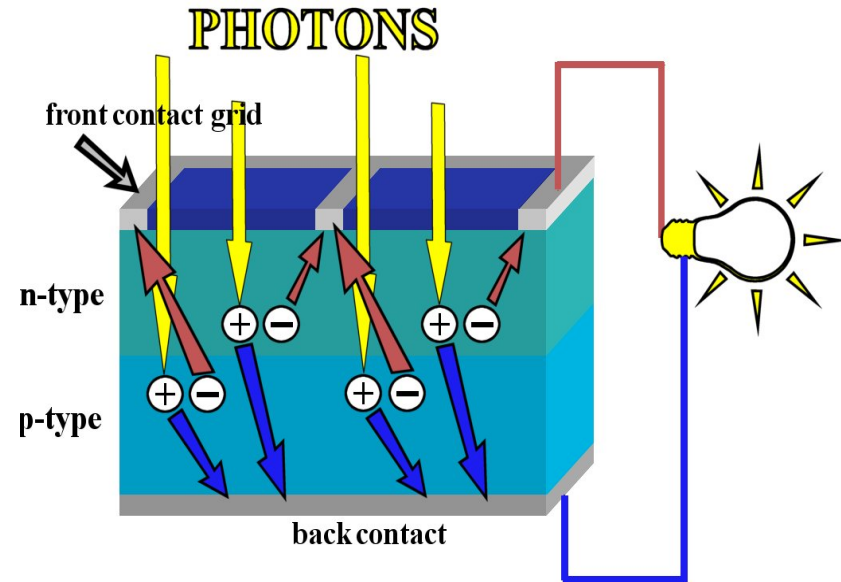
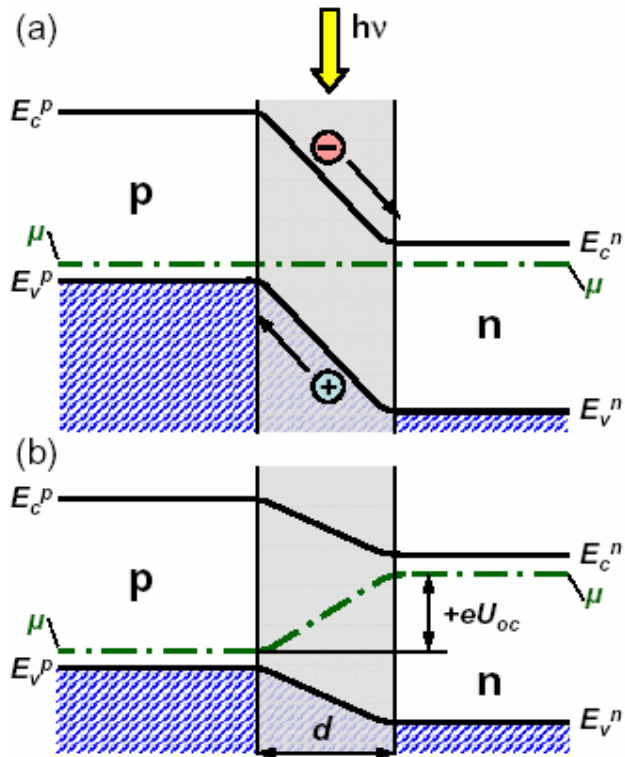


## 3. Electrical photo sensors

**Solar cell** = n/p-diode exposed to light

Photons create electron-hole-pairs in the depletion layer

→ charge separation in the internal electric field



Continuous light-exposure

→ non-equilibrium:

drift-current > diffusive current

→ Fermi-Level is shifted

→ potential difference  $U_{oc}$  between n- and p-type layer

# The Bionic Human



## 3. Electrical photo sensors

### Photodiode

= resistor with resistance that depends on the incoming light intensity

### Realization:

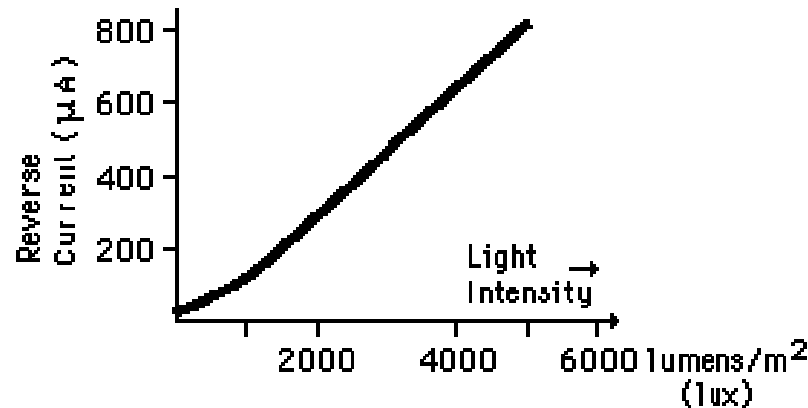
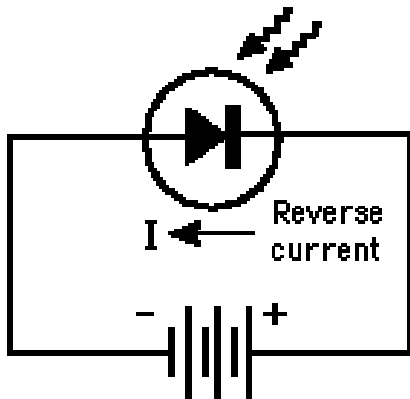
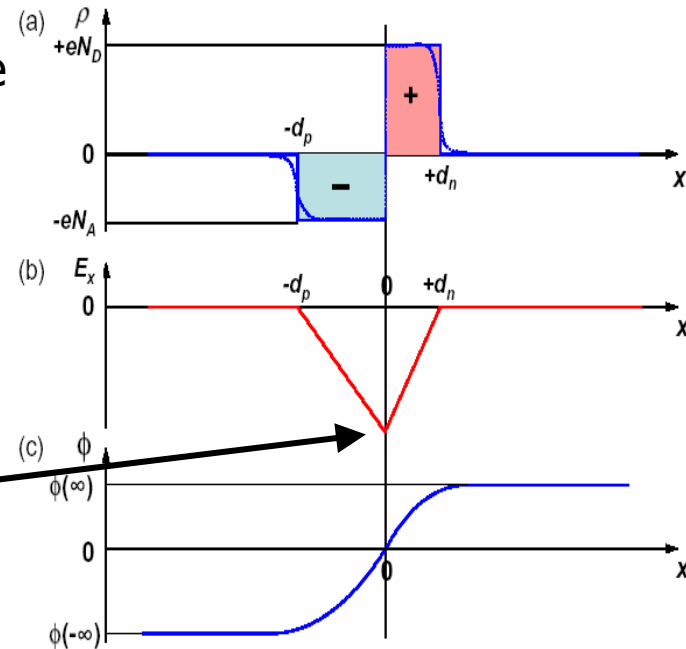
Solar cell run in reverse bias mode

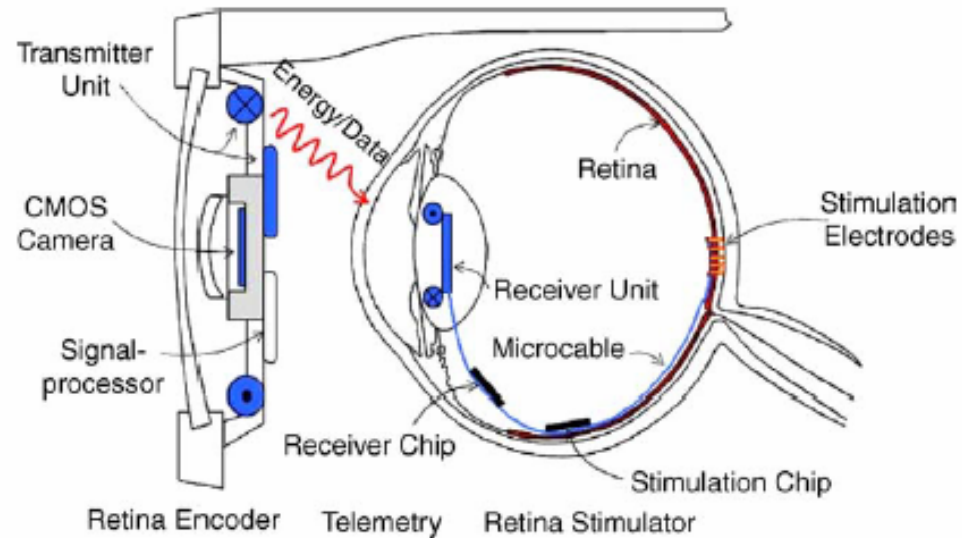
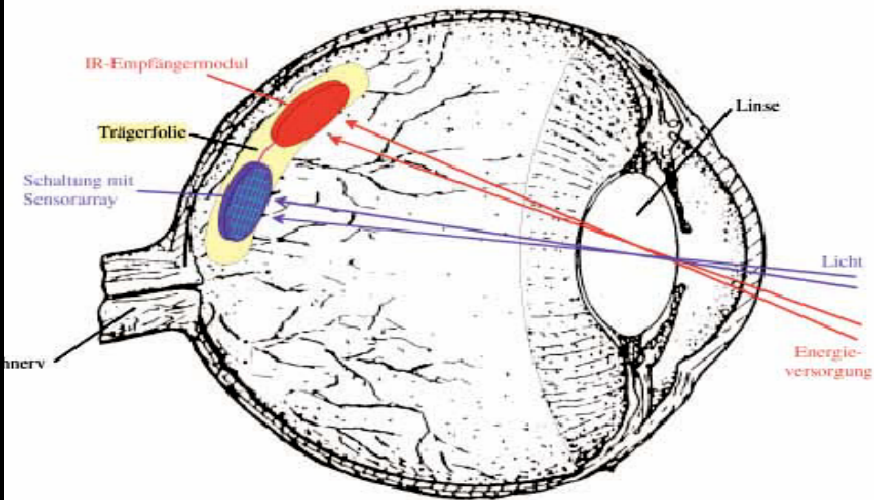
### Functionality:

dark: diode blocked ( $R \rightarrow \infty$ )

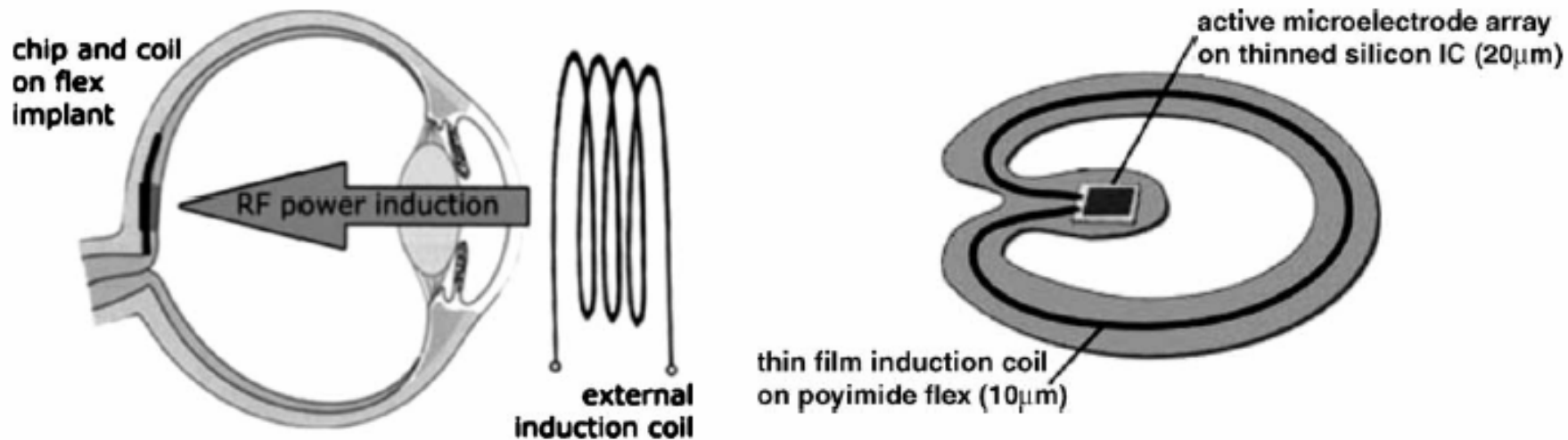
bright: internal electrical field decreased

→ reverse current increases





## 4. How to supply the implant with power?





### Power needed:

- Epiretinal implants (computation + 3500 electrodes):  $\approx 50\text{mW}$
- Subretinal implants (stimulation):  $\approx 200\text{mW/cm}^2$

### Power density in visible light (on retina):

- artificial light:  $\approx 1\text{mW/cm}^2$
- sunlight (at noon):  $\approx 10\text{mW/cm}^2$

**Tolerated light intensity of human eye:**  $\ll 200\text{mW/cm}^2$

**→ Need for wireless power supply!**

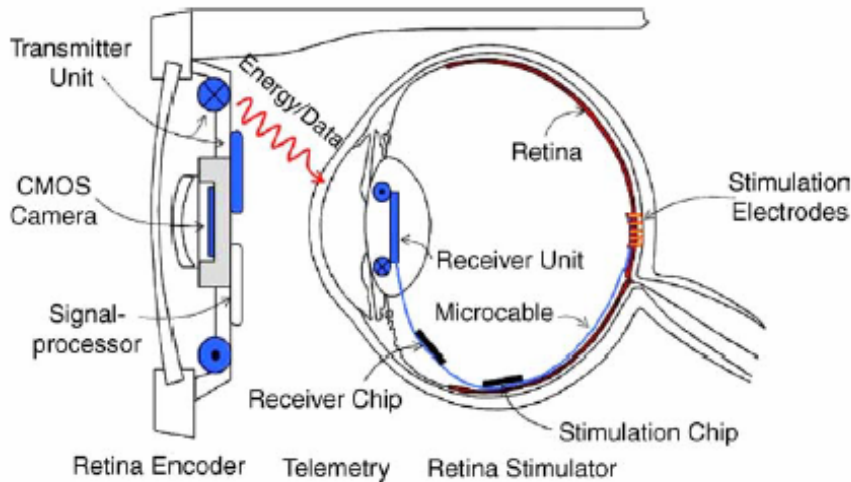
# The Bionic Human



## 4. Power supply and information transmission

### Solutions:

#### i) Inductive coupling (for epiretinal implants)



technical properties:

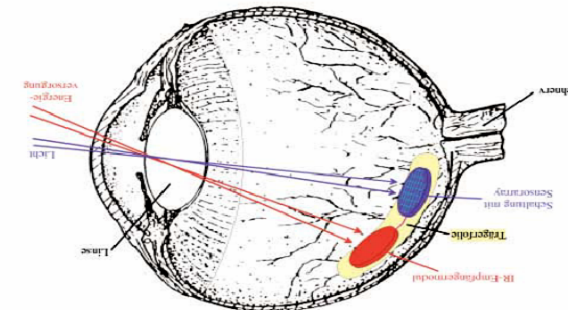
- primary coil: 5cm diameter
- secondary coil: 1.5mm diameter
- frequency: 1 MHz
- alignment: coplanar (glasses)

→ **efficiency of 2%**

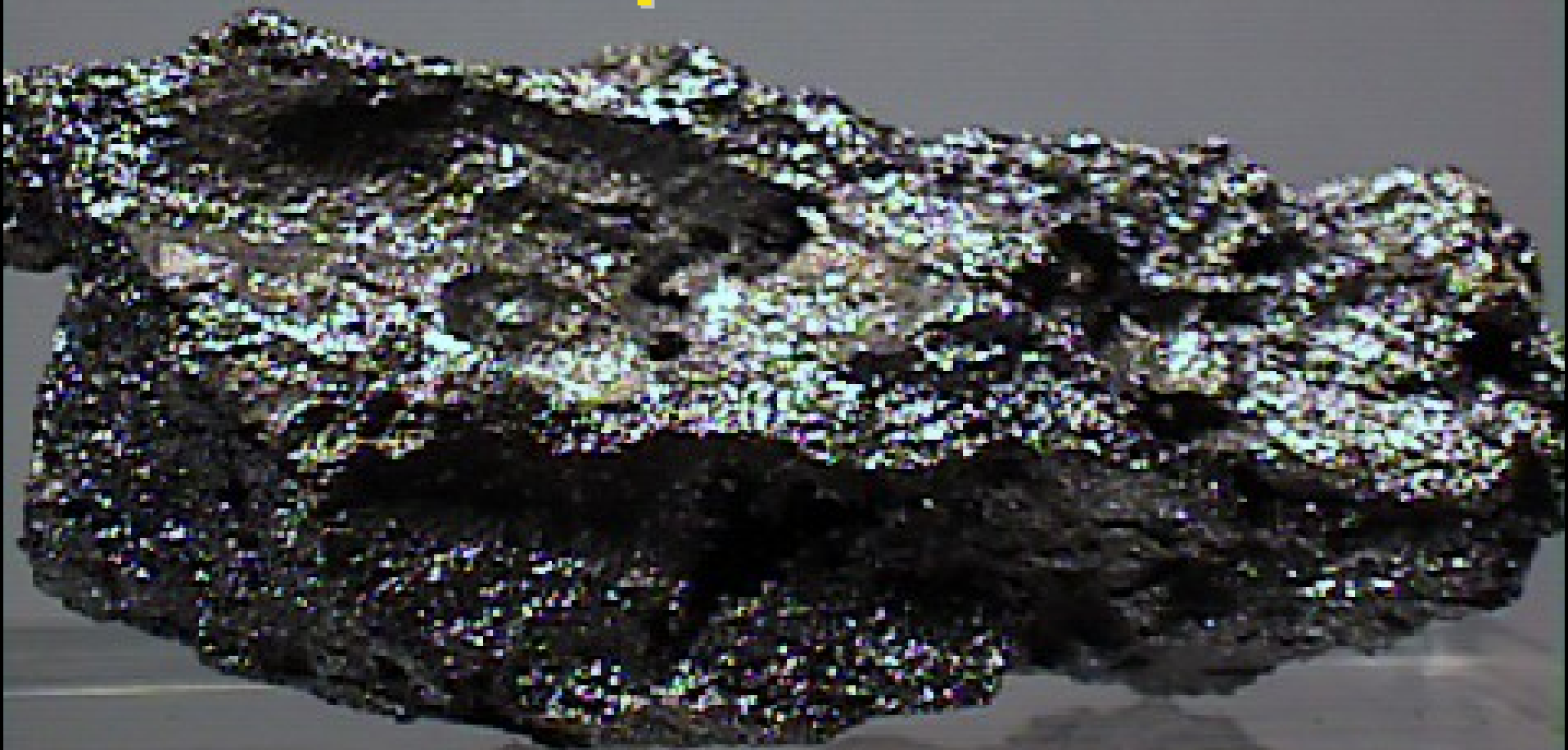
#### ii) Near-infrared solar-cell (for subretinal implants)

technical properties:

- tolerated NIR power density:  $\geq 200\text{mW}/\text{cm}^2$
- absorption of eye (900nm):  $\approx 5\text{-}10\%$
- Light generation: LED



**5. Which materials will survive decades of implantation?**



# The Bionic Human



## 5. Suitable materials and encapsulation

### Major problems:

- **Biocompatibility:**

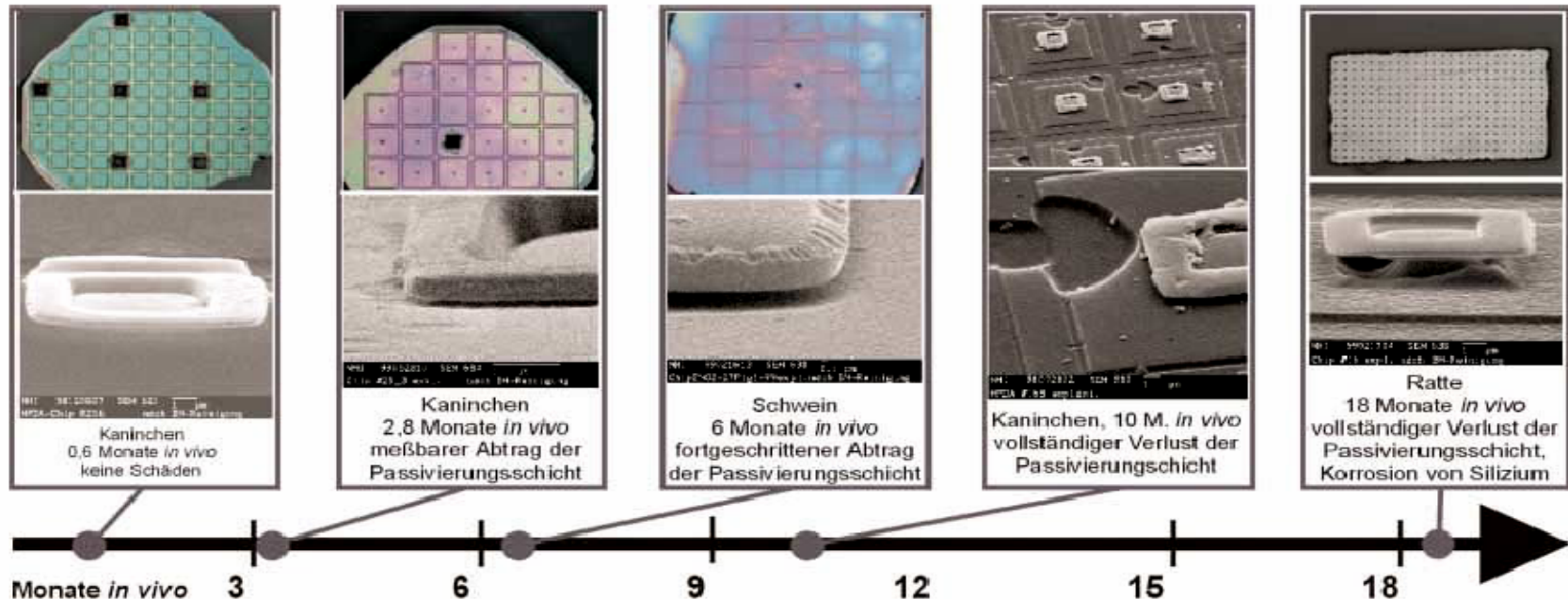
- limits for electrical current- and charge-densities
- avoid infections and inflammation
- heat drainage
- surface-functionalization

cochlea implants show long-time acceptance

- **Circuit protection**

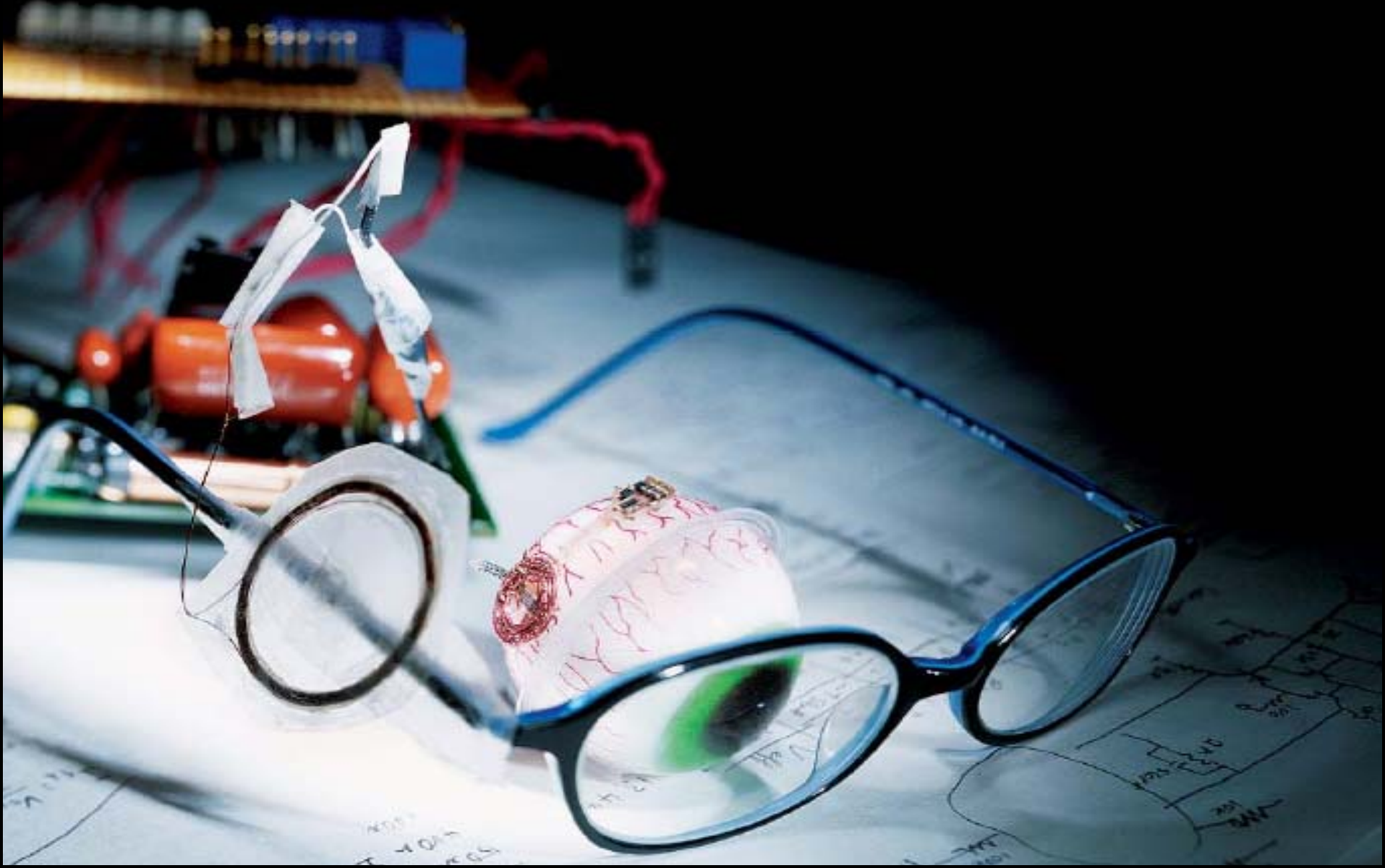
- proper electrode materials: e.g. Pt and alloys with Ir
- encapsulation: e.g. silicon-to-glass solder bonding  
→ 10-MPascal-seal

"mild" climate in the eye





## 6. State of the art

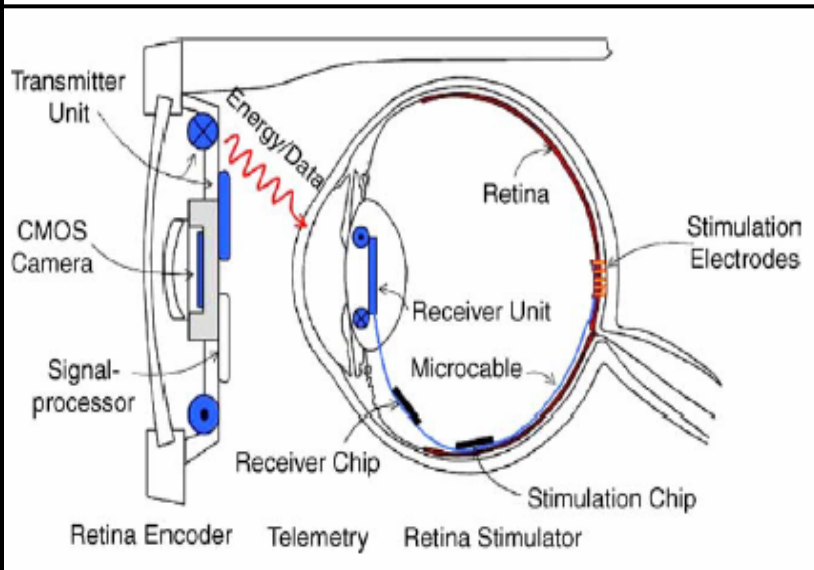


# The Bionic Human



## 6. State of the art systems

### Epiretinal implants:

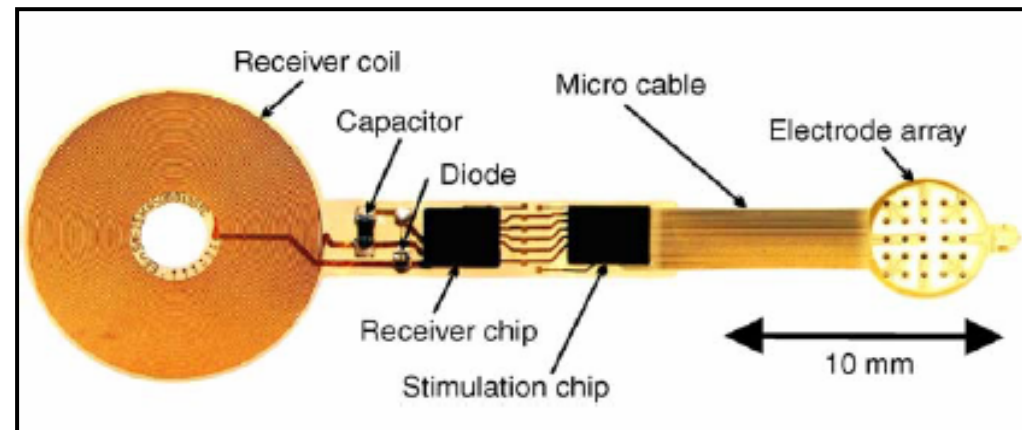
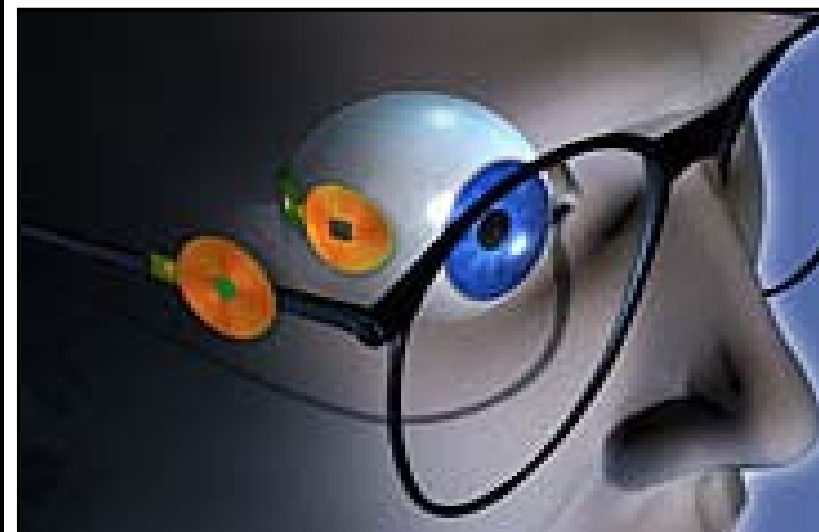


- **Prof. Görtz et al. (Bonn):**

- successful test (cortically evoked potentials) in cats and minipigs
- implantation in human patients planned (adaptive patterns generator) after further material test and pattern studies

- **Prof. Rizzo et al. (Harvard):**

- in-vitro: threshold and stim. patterns
- in-vivo: study with 6 patients:  
→ perception of small light patterns



# The Bionic Human



## 6. State of the art systems

### Subretinal Systems:

- **Prof. Zrenner et al. (Tübingen):**

- **Thin film micro photodiode array (MPDA)**

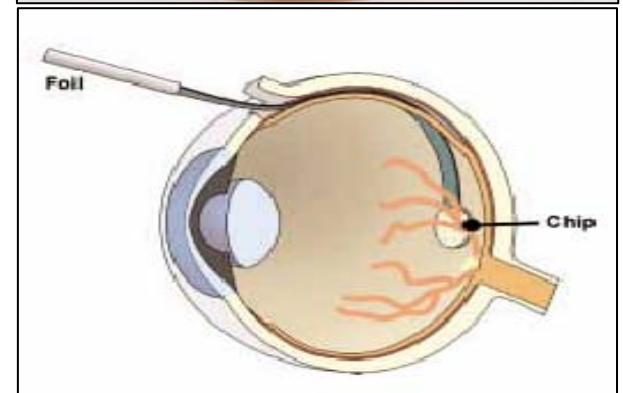
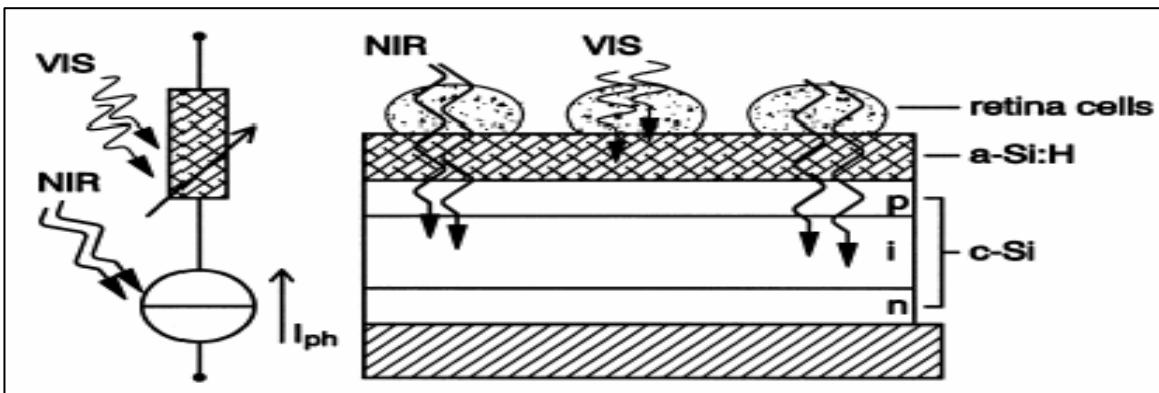
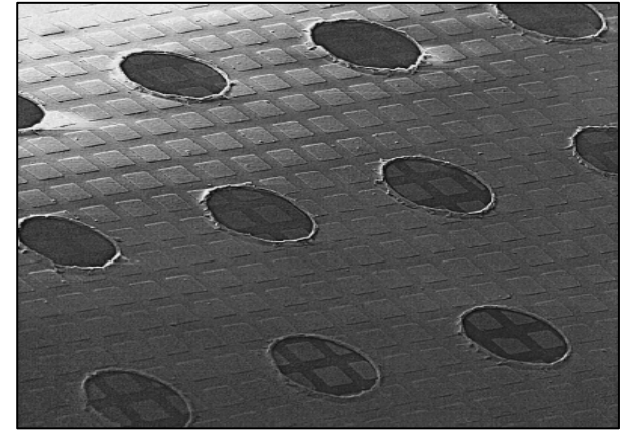
- NIR-cell (doped c-Si): provide voltage 2-3V
- VIS-photodiode (a-Si:H)

→ preparations of first study (8 patients)

- **Prof. Chow et al. (Chicago):**

first study with 6 patients over 18 months

- full functionality of electronics after 18mths
- no rejections, infections,...
- visual function improvements:  
perception of shades of objects but no letters



# The Bionic Human



## Sources:

### Homepages:

<http://www.eye-chip.com> (Zrenner et al. / Tübingen)

<http://www.pat.rwth-aachen.de> (Görtz et al. / Bonn)

<http://www.bostonretinalimplant.org/> (Rizzo et al. / Harvard)

<http://www.optobionics.com/> (Chow et al. / Chicago)

### Publications:

**M.B. Schubert et al. , *Sensors and Actuators* (1999):**

*Optimizing photodiode arrays for the use as retinal implants*

**M. Görtz et al., *Sensors and Actuators* (2005):**

*Production processes for a flexible retina implant*

**J. Rizzo et al., J. Wyatt et al., *American Scientific* (2004):**

*Artificial Retina*

**A.Y. Chow et al., *Arch Ophthalmol* (2004)**

*The Artificial Silicon Retina Microchip for the Treatment of Vision Loss From Retinitis Pigm.*

**M.S. Humayun et al., J.D. Weinland et al., *Survey of Ophthalmology* (2002)**

*Retinal Prosthesis for the Blind*

**Script of Prof. Gross (TU Munich): *Solid State Physic***