





Antithrombogenic Biomaterials

Physical Model and Technology


Flavius Deleanu / Kathrin Lorenz / Dr. Alexander Rzany

Max Schaldach-Stiftungsprofessur für Biomedizinische Technik
Friedrich-Alexander-University Erlangen-Nuremberg, Germany

MB-JASS 2009



Stents





```
graph TD; A[Arteriosclerosis] --> B[Blocked coronary artery]; B --> C[Crack open the chest and surgically bypass the stenosis]; B --> D[Clear the artery from within by inflating a tiny balloon and propping it open with a wire-mesh stent];
```

Arteriosclerosis

Blocked coronary artery

Crack open the chest and surgically bypass the stenosis

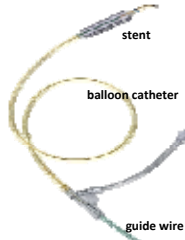
Clear the artery from within by inflating a tiny balloon and propping it open with a wire-mesh stent



Minimal invasive therapy of arteriosclerosis



Access via the femoral artery

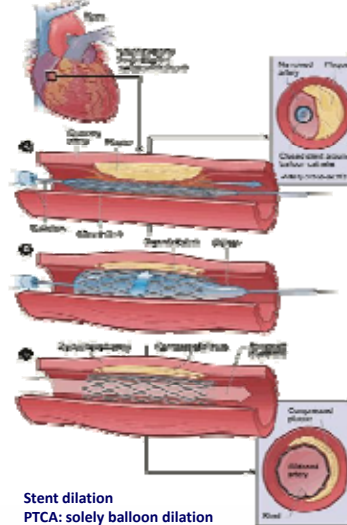


Stent system



Angiographic workplace in the hospital

National Institute of Health: www.nih.gov



Stent dilation
PTCA: solely balloon dilation

Max Schalldach -
Stiftungsprofessor

Biomedizinische
Technik MSBT

Angiographic control of stent implantation



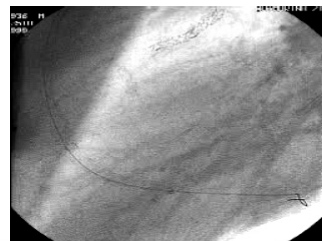
Angiographic image of coronary stenosis



Placement of the coronary stent



Dilation of the coronary stent



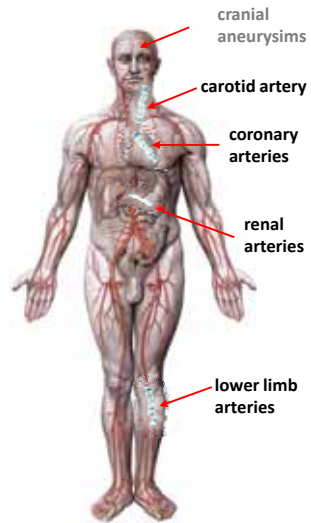
Angiographic control

Max Schalldach -
Stiftungsprofessor

Biomedizinische
Technik MSBT

Stents

- Coronary arteries
- Peripheral arteries
- Treatment of aneurysms
- Non-blood applications:
prostate, bladder, esophagus, ...



Max Schaldach -
Stiftungsprofessor

Biomedizinische
Technik MSBT

Bare Metal Stents in the vascular system

balloon expandable stents

coronary and deep peripheral arteries



Ductility: stainless steel (316L), Co/Cr-alloy (L605)

self expanding stents

superficial peripheral arteries



Superelasticity: Ni/Ti-alloy (Nitinol)

Max Schaldach -
Stiftungsprofessor

Biomedizinische
Technik MSBT

Design of modern coronary stents

Stent design optimized for specific metal/alloy:

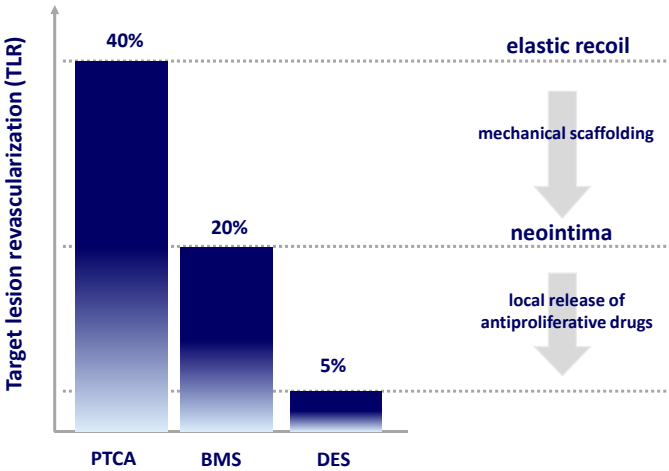
- flexibility of the entire system
- intrinsic elastic recoil
- shortening due to the dilation
- covering of the vessel wall
- mechanical stress on the vessel

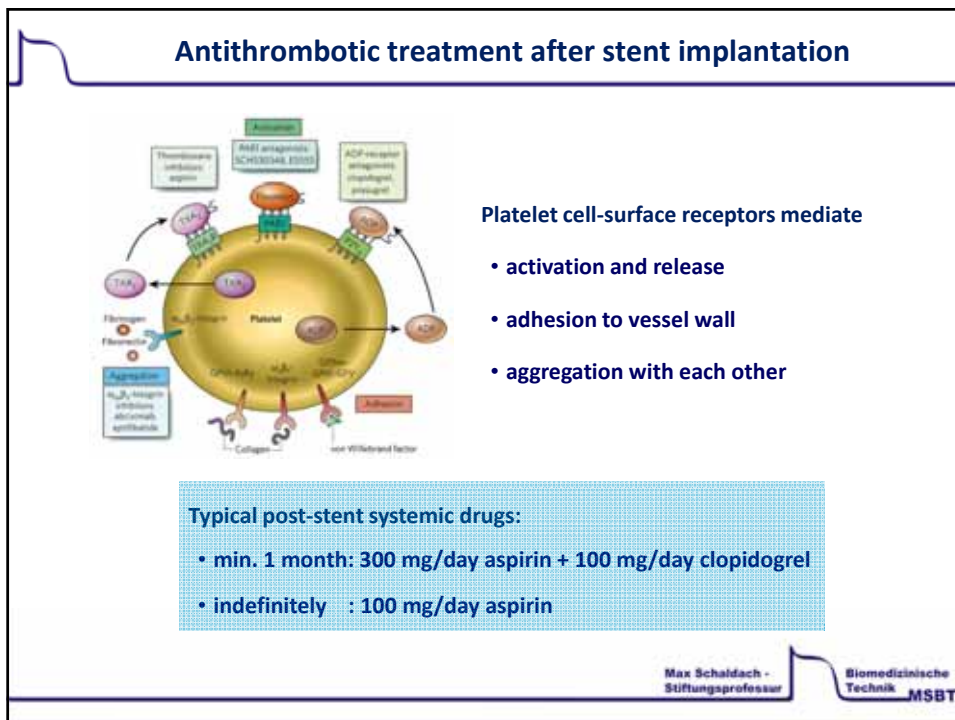
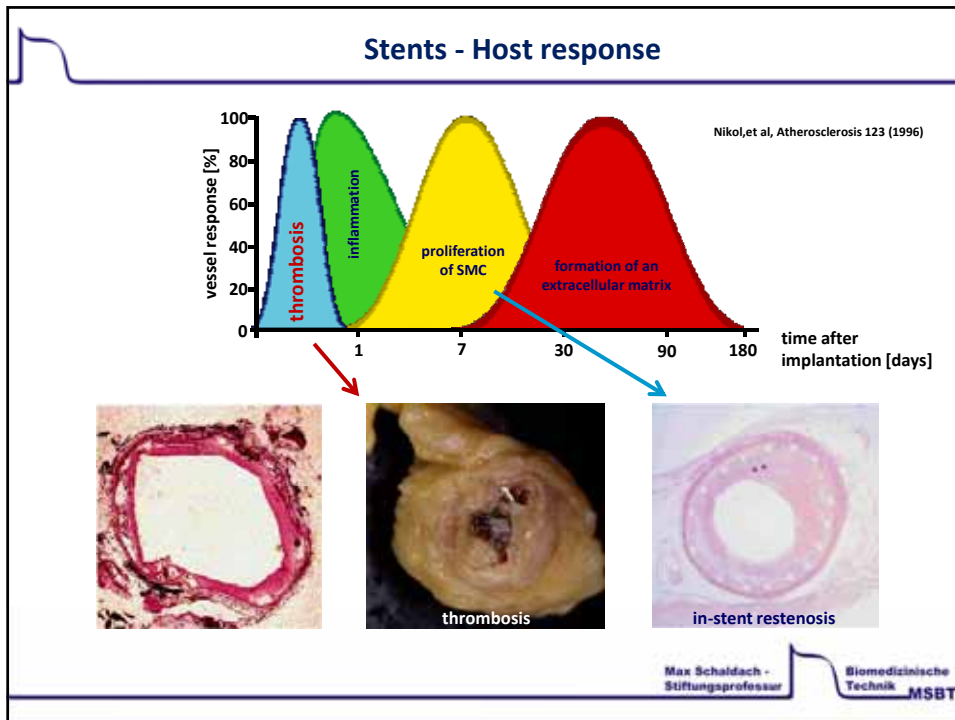


PRO-Kinetic (BIOTRONIK)

| Stainless Steel (316L) | | Cobalt/Chromium (L605) | | Nitinol (SE508) | |
|------------------------|-------------|------------------------|-------------|------------------------------------|-------------|
| Element | Content [%] | Element | Content [%] | Element | Content [%] |
| Iron | 65 | Cobalt | 50.5 | Nickel | 55.8 |
| Chromium | 18 | Chromium | 20 | Titanium | 44.2 |
| Nickel | 14 | Nickel | 10 | | |
| Molybdenum | 3 | Tungsten | 15 | Transformation temperature: < 15°C | |
| | | Manganese | 1.5 | | |
| | | Iron (max.) | 3 | | |

Coronary Stents – overall complication rate (1 year)





Hemocompatibility of Metals

ELECTROCHEMICAL PRECIPITATION OF HUMAN BLOOD CELLS AND ITS POSSIBLE RELATION TO INTRAVASCULAR THROMBOSIS*

By P. N. SAWYER, W. H. BRAYTAIN, AND P. J. BODDY
DEPARTMENTS OF SURGERY AND SURGICAL RESEARCH, DOWNSTATE MEDICAL CENTER, STATE UNIVERSITY OF NEW YORK, AND BELL TELEPHONE LABORATORIES
Communicated January 27, 1964

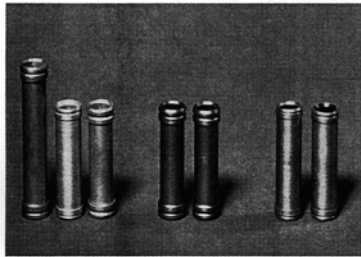


Fig. 2. Photograph of metal tube vascular prostheses, constructed of various metals, inserted into both aorta and thoracic inferior vena cava.

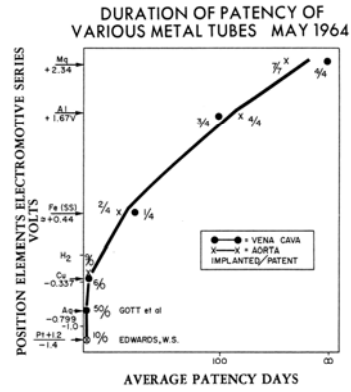


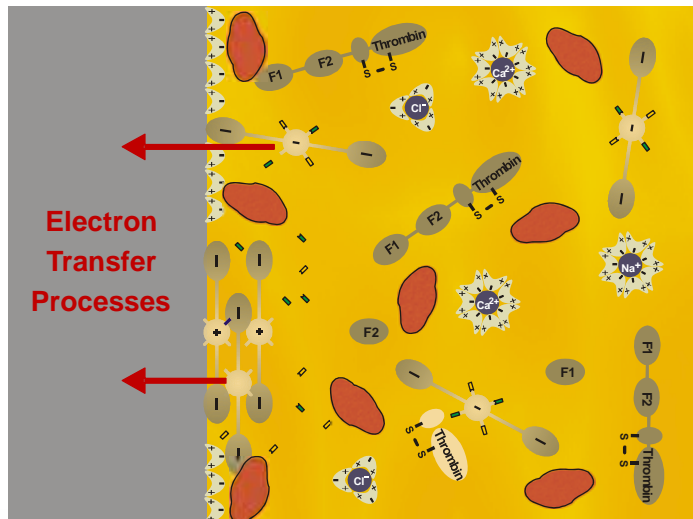
Fig. 3. Tubes constructed of either Mg or Al, high in the electromotive series, have been found to remain patent for long periods. Tubes constructed of elements lower in the series remain patent for shorter and shorter periods, until those constructed of Cu, Ag, Pt thrombose in less than one day.

"Biophysical Mechanisms in Vascular Hemostasis and Intravascular Thrombosis"
P. N. Sawyer (Ed.), New York 1965

Max Schaldach -
Stiftungsprofessor

Biomedizinische
Technik MSBT

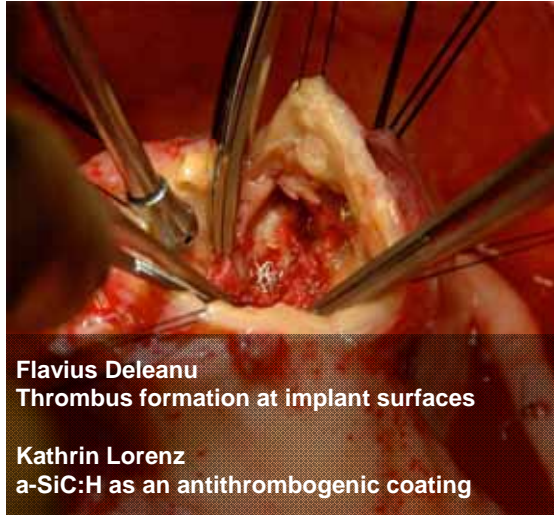
Biomaterial-Blood Interface



Max Schaldach -
Stiftungsprofessor

Biomedizinische
Technik MSBT

Workshop Antithrombogenic Biomaterials



Flavius Deleanu
Thrombus formation at implant surfaces

Kathrin Lorenz
a-SiC:H as an antithrombogenic coating

Max Schaldach -
Stiftungsprofessor

Biomedizinische
Technik MSBT

Silicon Carbide coated Stents



Astron (316L SS),
BIOTRONIK



ProKinetic (CoCr),
BIOTRONIK



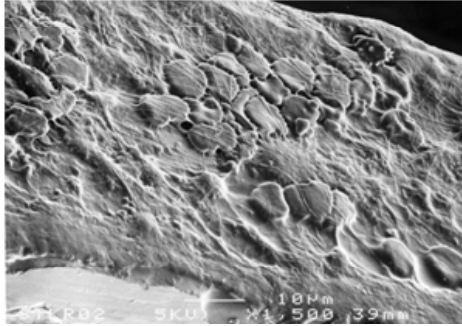
Philon (NiTi),
BIOTRONIK

Max Schaldach -
Stiftungsprofessor

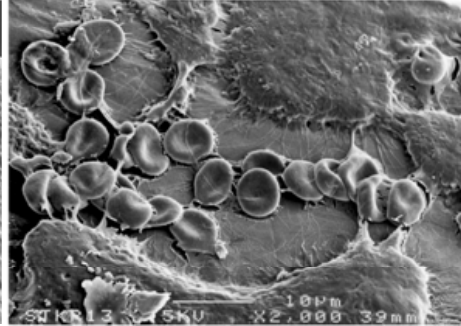
Biomedizinische
Technik MSBT

Hemocompatibility of the Silicon Carbide Coating

Stainless Steel (316L)



Silicon Carbide (a-SiC:H)



1 day in contact with human whole blood

10µm



Max Schalbach -
Stiftungsprofessor

Biomedizinische
Technik MSBT