

Metallic Implants In Biomedical Engineering

Kerstin Tillmann

March 2011

Implants

- substitution of damaged mechanical and physical functions of the
- human body
- temporary implants and long-term implants
- direct contact with human tissue
 - ➔ Choice of the right material is very important

Used materials:

- polymers
- metals
- ceramics

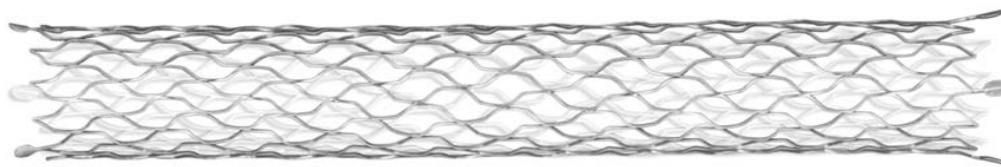
Metallic Implants

Main applications for metallic implants

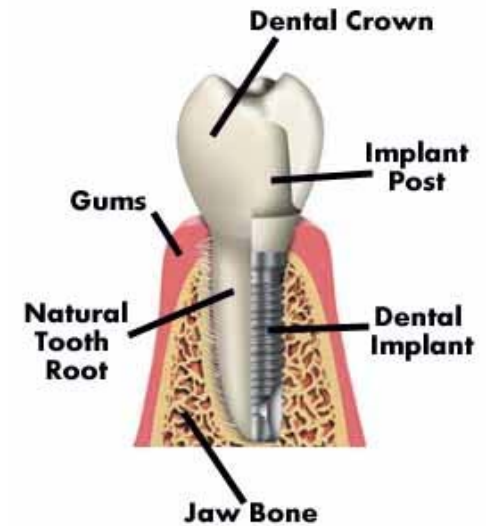


[1] Screws, nails and plates for bone fractures

- Osteosynthesis and joint replacement
- dental surgery
- vascular surgery



[2] Stent



[3] Dental implant

[1] <http://www.beverlyhillsperio.com/dental-implants.html>

[2] <http://www.opti-med.de/nc/produkte/details/p-kategorie/vaskulaere-interventionen/subkategorie/stents/p-produkt/sinus-repo-visual-6f/>

[3] <http://www.beverlyhillsperio.com/dental-implants.html>

Demands On Metallic Implants

- **Mechanical strength:** guarantee of steady load transmission between implant and body tissue, similar stiffness of implant to the bone.
- **Biocompatibility:** no damage of body tissue by the implant or primary corrosion products and abrasion particles.
- **Corrosive stability** (in many cases), for some applications absorbable metals are necessary
- **Haemocompatibility** (for implants in contact with blood): behaviour of material surfaces to blood

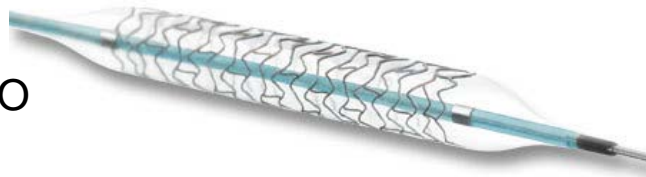
➔ **metals used in medical engineering** for non-absorbable implants:

- stainless steel
- cobalt alloys
- Ti and Ti-alloys

Biocompatible Metals

- **Stainless steel 316L:** Cr 17–20 wt.%, Ni 12–14 wt.%, Mo 2–4 wt.%
Application: plates, screws
- **CoCr-Alloys:** Cr < 27 wt.%, Mo 5-7 wt.%, Ni < 1%
Application: joint replacement, cardiac valves, stents
- **Ti, Ti-Alloys TiAl6V4 and TiAl6Nb7**
Application: dental implants, hip joint endoprosthesis

[4] CoCr-Stent PRO
Kinetic, Biotronik



[5] Ti-hip joint
endoprosthesis

[4] <http://www.biotronik.de/de/de/884#>

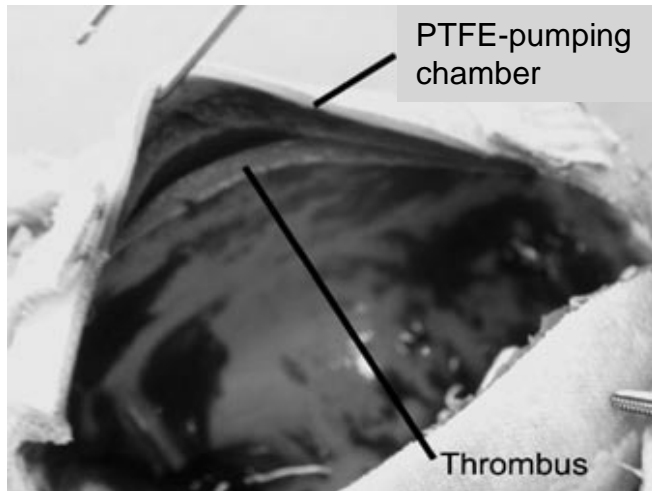
[5] <http://www.euromed.de>

Titanisation of Polymersurfaces

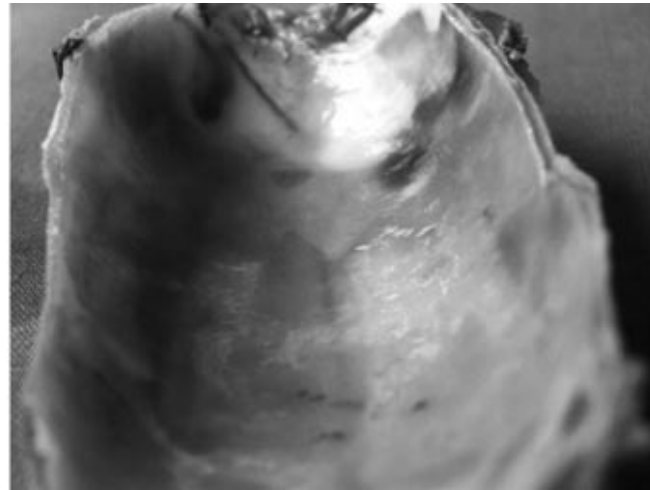
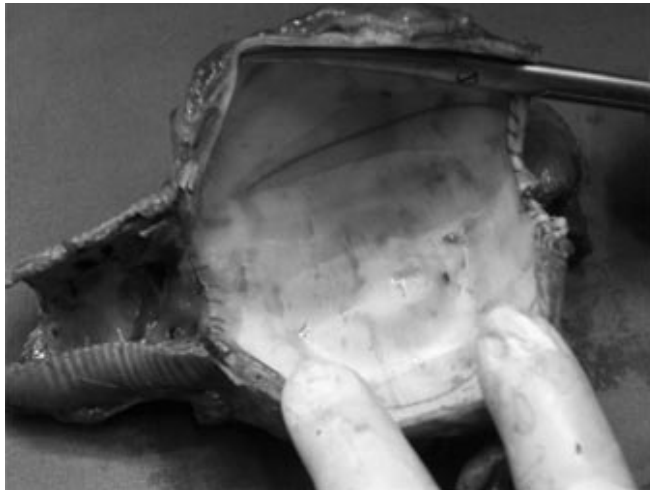
- Formation of TiO_2
- Excellence **adsorption of proteins** on implant-surface
 - ➔ higher **cell vitality** than on uncoated polymers
 - ➔ **integration of implant** in human tissue
- Ti-coated surfaces act **anti-thrombogenic**

Applications: vascular implants, artificial hearts

Ti-coated Biomechanical Heart (BMH)



PTFE-pumping chamber of a BMH after an implantation time of 8 weeks. Inner surface completely covered by a thrombus.



Ti-coated PTFE-pumping chamber of BMH after an implantation time of 6,5 month. Inner surface is thinly covered with endothelial tissue.

[6] E. Wintermantel. Medizintechnik – Life Science Engineering. Springer-Verlag, 2009.

Bioabsorbable Implants

Applications:

- sutures
- Plates, screws
- Stents

Advantages:

- Avoidance of a second surgery
- No negative impact on the tissue caused by mechanical long-term loading

Disadvantage:

Today mainly implants made from polymers (PLA, PGA)

- ➔ limited mechanical properties and inflammatory response



Solution: metallic bioabsorbable implants
(iron, magnesium, zinc)

Magnesium as Implant-material

Why magnesium?

- **Hypothrombogenic** properties and **tissue tolerance**
- **Mechanical** properties
- Important **trace-element** in the human body

But **pure magnesium** is too **corrosive** as implant-material

➡ Usage of magnesium alloys

➡ Coatings

Magnesium Alloys in Implantology

Assortment of used **alloys**: AZ91, WE43, MgCa0.8

- **Al**: improvement of corrosion behaviour ($Mg_{17}Al_{12}$, Mg_2Al_3)
- **Ca**: for higher creep resistance
- **Mn**: catcher of iron and reduction of corrosive activity of residual Fe-impurities
- **Y, Nd, Zn**: improvement in mechanical strength
- **Zr**: grain refinement



[7] MgCa0.8 bone screws

Magnesium Alloy Stent

- Composition of WE43 [8]

Element	Ratio [wt.%]
Yttrium	3.7 – 4.3
Rare Earth Elements	2.4 – 4.4
thereof Neodym	2.0 – 2.5
Zirconium	0.4 min
Magnesium	Balance

- Lifetime of a WE43 stent is 2 months in human body [9]
- Assumed Lifetime > 4 months

 coatings for improved corrosion behaviour

[8] Magnesium Elektron. Elektron WE43 Wrought Alloy – Datasheet: 478.

[9] J.A. Ormiston et al. Bioabsorbable Coronary Stents. Contemporary Reviews in Interventional Cardiology 2 (2009) 255 - 260.

Coatings

- **Polymer-Coating:**

- ➔ no bare metal implant
- ➔ negative properties of a polymer implant, only as drug-eluting system useful [10]

- **Metallic Coating:**

- electrochemical methods
- Physical and Chemical Vapour Deposition (PVD, CVD)

Problem: in many cases no sufficient adhesion

➔ **Thermal Treatment**

Thermal Treatment

Aim of thermal treatment:

- good coating adhesion
- only alloying in the contact region

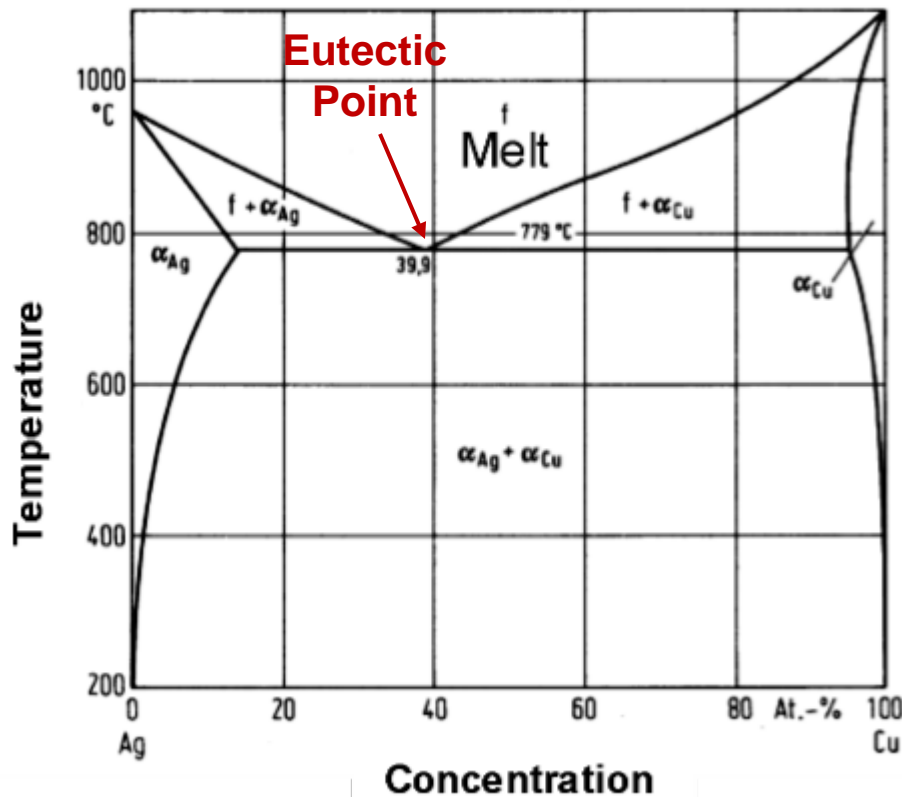


utilisation of eutectic systems

Eutectic system:

melting point of the binary system of two substances has a lower temperature than the melting points of the pure substances.

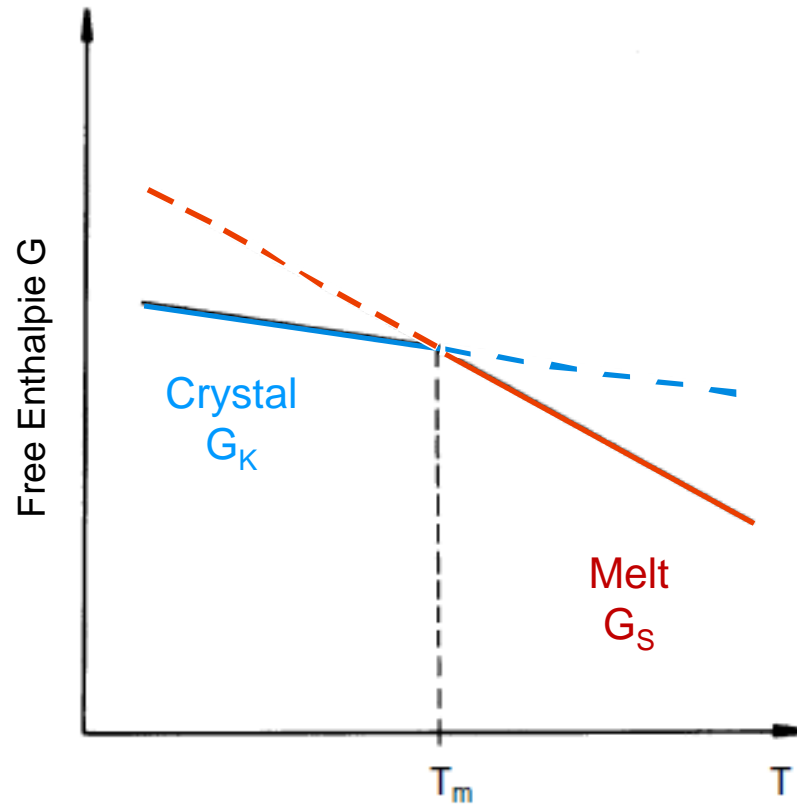
Eutectic Phase Diagram



- Formed phases at eutectic point are called eutectic alloys
- Technical usage of eutectic alloys for brazing (Sn62Pb38)
- Popular application of eutectics in medical engineering are amalgam fillings

[11] Eutectic phase diagramm Ag-Cu

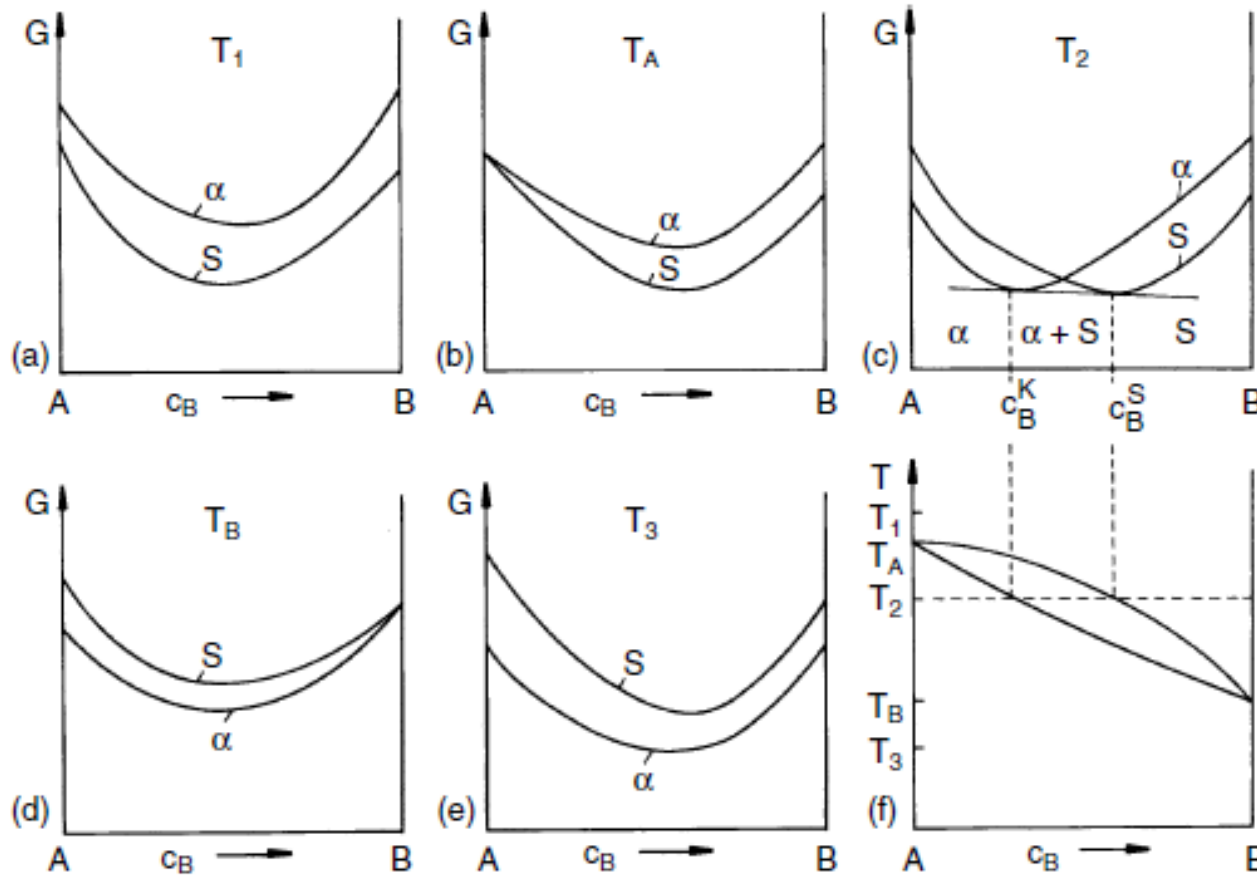
Thermodynamical Illustrations



- Generally the phase with the lowest free energy will appear
- Free energy of crystal and melt are different
 - ➔ intersection point
 - ➔ melting point

[12] Free Enthalpie of a pure metal as a function of temperature for solid and liquid phase.

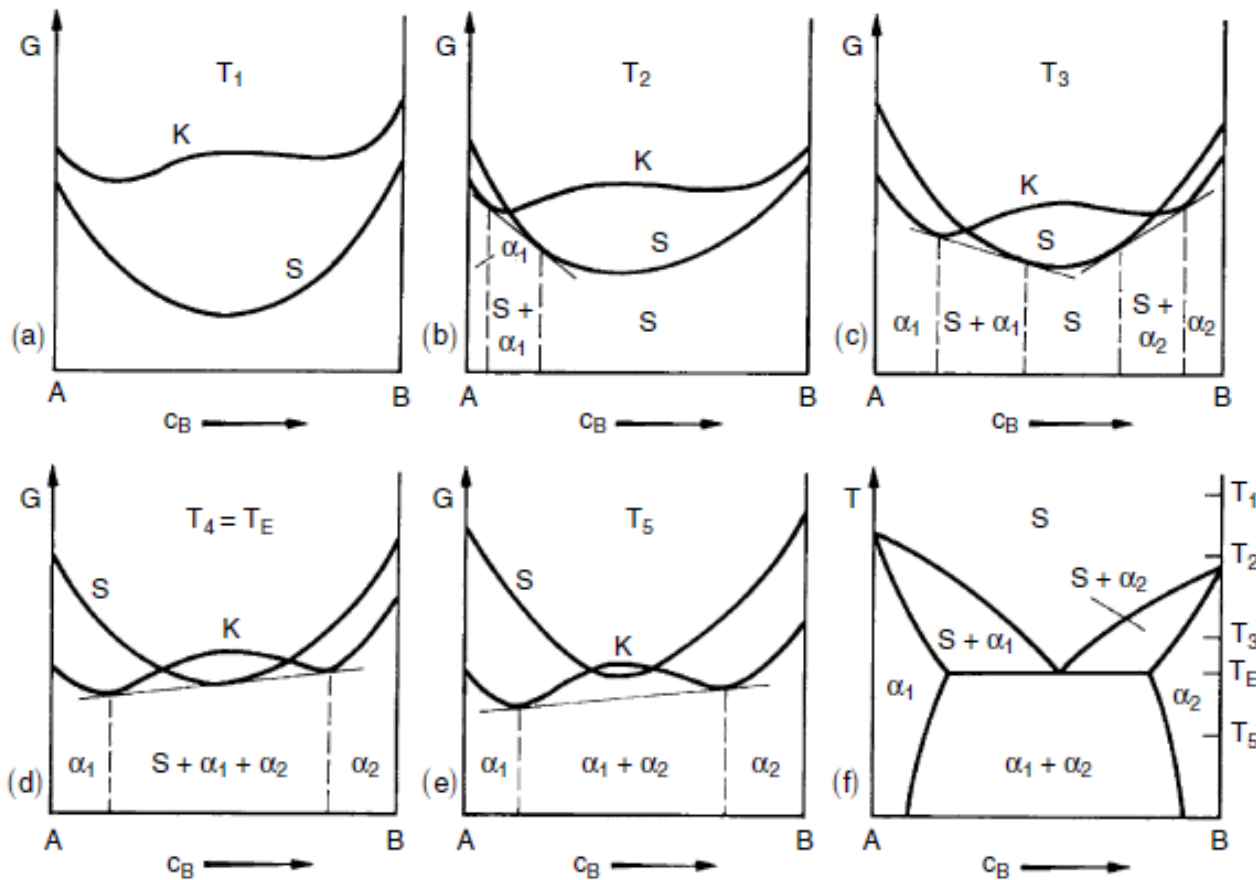
Binary Alloys with full Miscibility



- Approximation of the free enthalpy of a binary alloy by a parabola
- phase with lowest free enthalpie appears, here also dependend on concentration

[12] Free enthalpie of crystal (α) and melt (S) of a binary alloy at different temperatures in (a)-(e), (f) phase diagram.

Binary Eutectic System

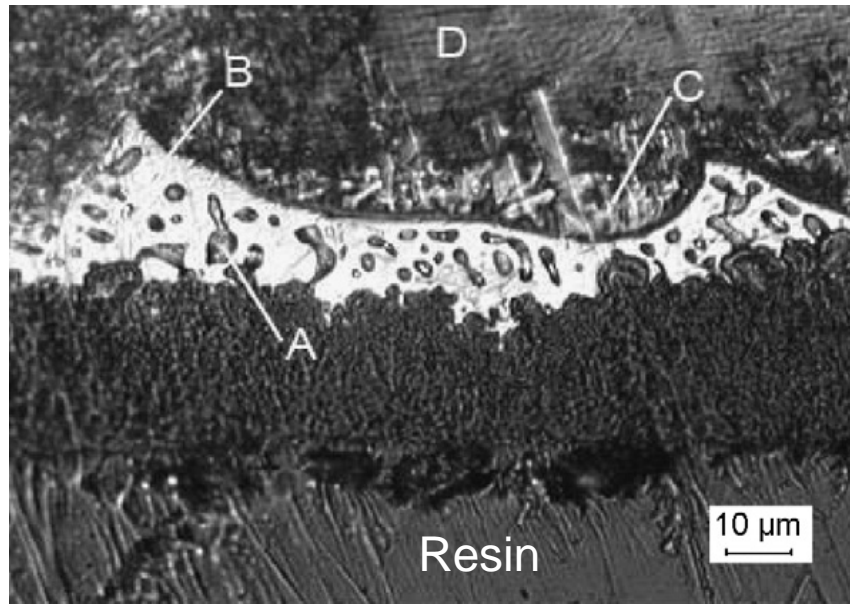


- miscibility gap in the solid state

➔ two minima in the free enthalpie curve of the crystal

[12] Free enthalpie of crystal (α) and melt (S) of a binary eutectic system at different temperatures in (a)-(e), (f) phase diagram.

Thermal Treatment of coated AZ91



Area	Mg (at. %)	Zn (at. %)	Al (at. %)
A	54.33	8.67	37.00
B	48.57	16.20	35.23
C	83.63	4.24	12.13
D	88.29	1.70	10.01

[13] Cross-section of a Zn, Al-coated AZ91 after thermal treatment at 700 K for 12 h.

Amalgam Fillings



[14] Amalgam filling

- Hg + “Alloy” (metallic powder) ratio 1:1

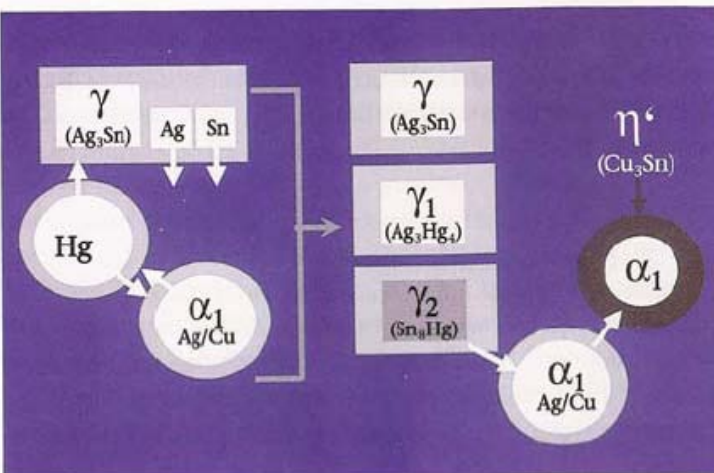
components of the “Alloy”:

> 40 % Ag	< 5 % In
< 32 % Sn	< 3 % Hg
< 30 % Cu	< 2 % Zn

Usage of eutectic Ag-Cu (72 wt.% Ag, 28 wt.% Cu) and Ag₃Sn.

- dissolution of alloy in Hg and precipitation of new crystalline phases after exceeding the saturation concentration

➔ hardening of the alloy (24 h)



[15] Phase-constitution of HCD-amalgam

[14] <http://www.drstaschke.de/34/Füllungen%20&%20Inlays.html>

[15] Kamann W. Die Amalgamfüllung. Deutscher Zahnärzteverlag, 2003.

State-of-the-art and Prospects

- Metals with good suitability for long-term implants
- Intensified research on bioabsorbable metals
- Efforts on the achievement of a better understanding of the processes on implant-surfaces (electrochemical processes, protein adsorption)
- Progress in stem cells research and tissue engineering could substitute implants in parts

**Thank you for your
attention!**